



orval.com.tr

ORIGINAL
VALVE

HAT TIPI VALFLER

IN - LINE VALVES



**ORIGINAL
VALVE**



Features

- Suitable for direct in-line installation,
- Body material steel DIN 1.0715,
- Body surface nickel coated,
- Flued viscosity 10 - 500 mm²/s (10-420 cSt),
- For mineral oil ISO 6743/4,
- Leakage 0 - 0,25 cm³/min

Özellikleri

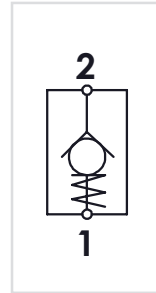
- Direkt hat üzerine montaja uygun,
- Gövde malzemesi çelik DIN 1.0715,
- Gövde yüzeyi nikel kaplama,
- Akışkan viskozitesi 10 - 500 mm²/s (10-420 cSt),
- ISO 6743/4 Mineral yağlar için,
- İç kaçak 0 - 0,25 cm³/min



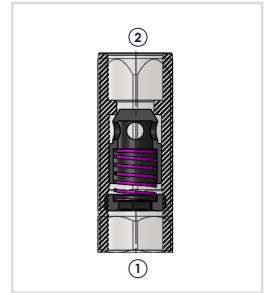
Order Code - Sipariş Kodu

HCV	- 06	- 1	B
Model - Tip	Size - Ebat	Spring Force - Yay Kuvveti	TheradType - Diş Tipi
HCV	06 = 1/4"	1 = 1 Bar *	B = BSPP
	08 = 3/8"	2 = 3 Bar	N = NPT
	10 = 1/2"	3 = 6 Bar	U = UNF
	15 = 3/4"		
	20 = 1"		
	25 = 1 1/4"		
	30 = 1 1/2"		

Circuit - Şema



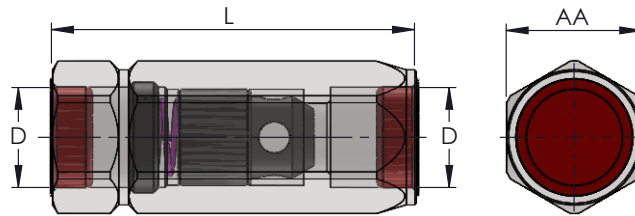
Sectional - Kesit



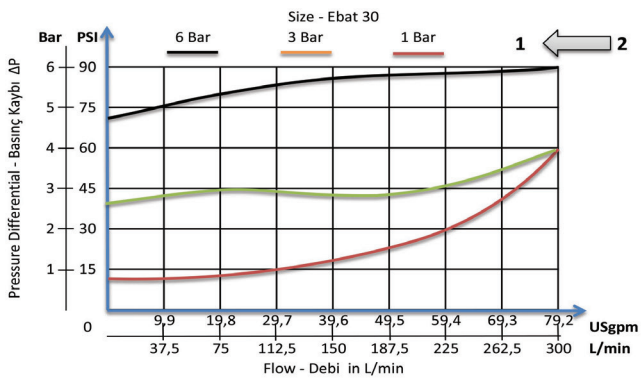
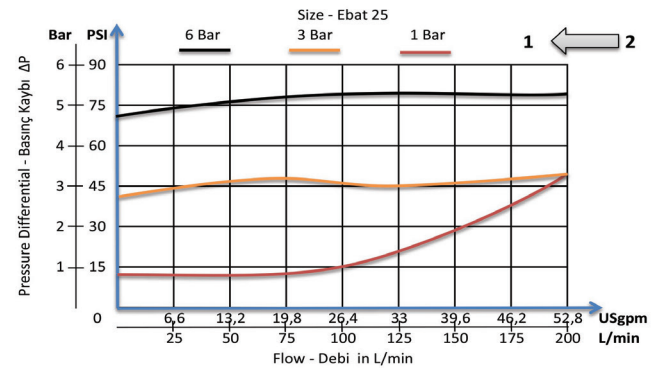
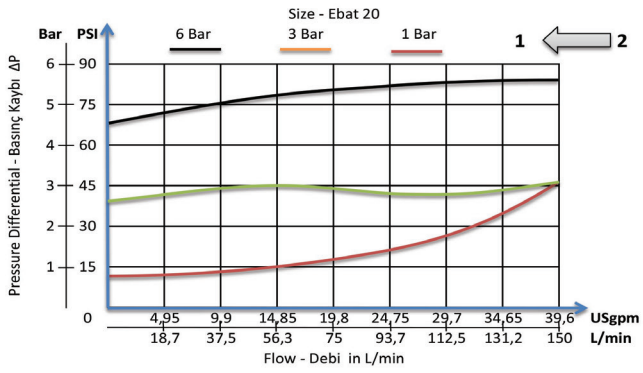
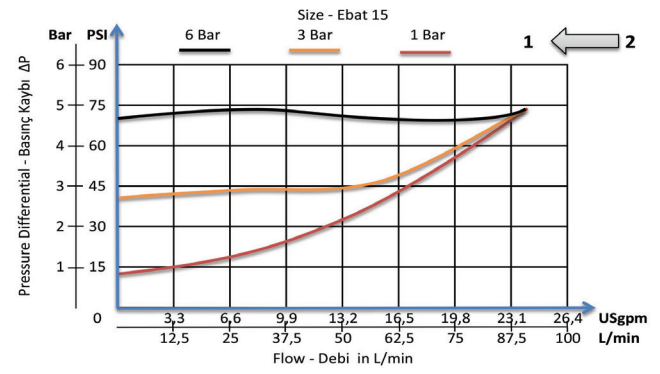
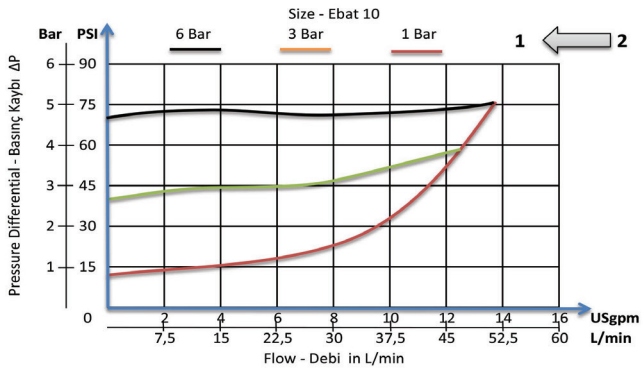
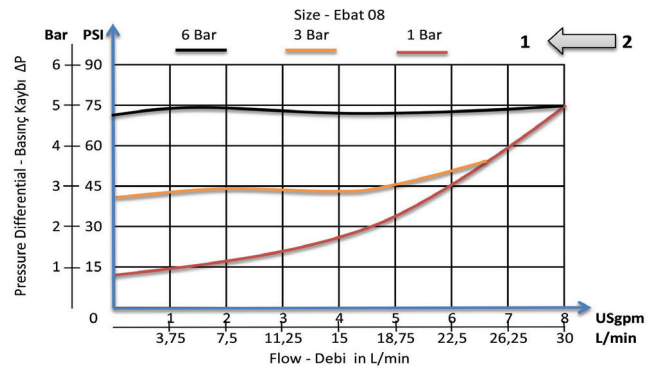
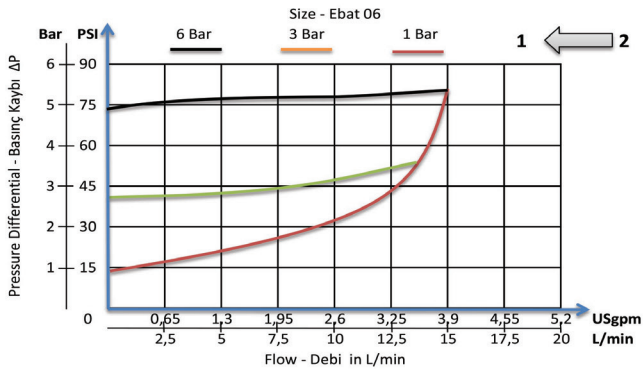
- * Standart spring force 1 Bar,
- * Standart yay kuvveti 1 Bar,

General Parameters and Dimensions (mm) – Genel parametreler ve ölçüler (mm)

Size - Ölçü	Q max	P max	ØD	AA	L	Weight Kg
	l/min	Bar	BSPP			Ağırlık
HCV-06	15	400	1/4"	19	55	0,10
HCV-08	30	400	3/8"	24	65	0,18
HCV-10	50	400	1/2"	27	75	0,23
HCV-15	90	400	3/4"	36	86,5	0,45
HCV-20	150	350	1"	41	110	0,73
HCV-25	200	350	1 1/4"	55	123	1,5
HCV-30	300	300	1 1/2"	60	138	2



Pressure Drop – Basınç Kaybı



Features

- Suitable for direct in-line installation,
- Body material steel DIN 1.0715,
- Body surface nickel coated,
- Flued viscosity 10 - 500 mm²/s (10-420 cSt),
- For mineral oil ISO 6743/4,
- Leakage 0 - 0,25 cm³/min

Özellikleri

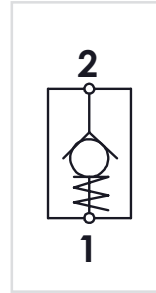
- Direkt hat üzerine montaja uygun,
- Gövde malzemesi çelik DIN 1.0715,
- Gövde yüzeyi nikel kaplama,
- Akışkan viskozitesi 10 - 500 mm²/s (10-420 cSt),
- ISO 6743/4 Mineral yağlar için,
- İç kaçak 0 - 0,25 cm³/min



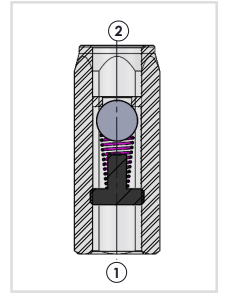
Order Code - Sipariş Kodu

HCB	-	06	-	1	B
Model - Tip	Size - Ebat	Spring Force - Yay Kuvveti	Therad Type - Diş Tipi		
HCB	06 = 1/4"	1 = 1 Bar *	B = BSPP		
	08 = 3/8"	2 = 3 Bar	N = NPT		
	10 = 1/2"	3 = 6 Bar	U = UNF		

Circuit - Şema



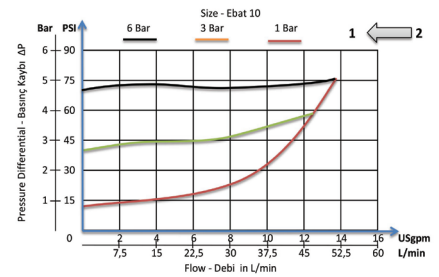
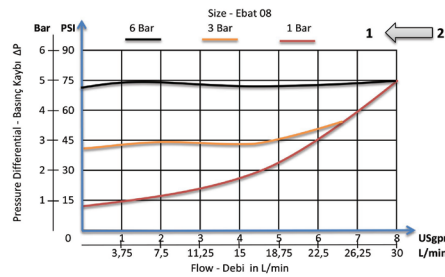
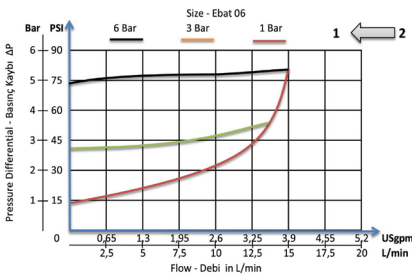
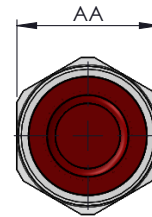
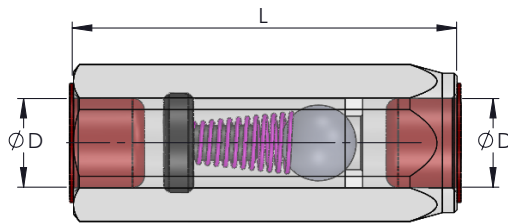
Sectional - Kesit



- * Standart spring force 1 Bar,
- * Standart yay kuvveti 1 Bar,

General Parameters and Dimensions (mm) – Genel parametreler ve ölçüler (mm)

Size - Ölçü	Q max	P max	ØD	AA	L	Weight Ağırlık
	l/min	Bar	BSPP			Kg
HCB-06	15	400	1/4"	19	55	0,10
HCB-08	30	400	3/8"	24	65	0,18
HCB-10	50	400	1/2"	27	75	0,23

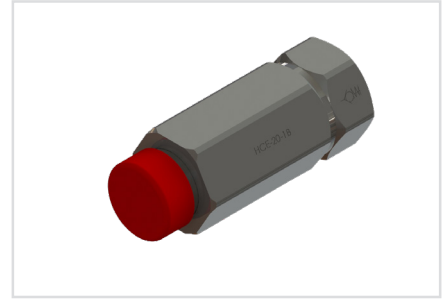


Features

- Suitable for direct in-line installation,
- Body material steel DIN 1.0715,
- Body surface nickel coated,
- Flued viscosity 10 - 500 mm²/s (10-420 cSt),
- For mineral oil ISO 6743/4,
- Leakage 0 - 0,25 cm³/min

Özellikleri

- Direkt hat üzerine montaja uygun,
- Gövde malzemesi çelik DIN 1.0715,
- Gövde yüzeyi nikel kaplama,
- Akışkan viskozitesi 10 - 500 mm²/s (10-420 cSt),
- ISO 6743/4 Mineral yağlar için,
- İç kaçak 0 - 0,25 cm³/min

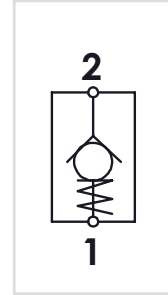


Order Code - Sipariş Kodu

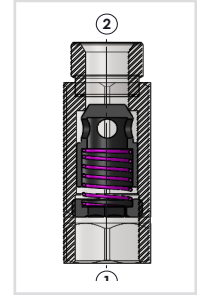
HCE	-	06	-	1	-	B
Model - Tip	Size - Ebat	Spring Force - Yay Kuvveti	TheradType - Diş Tipi			
HCE	06 = 1/4"	1 = 1 Bar *	B = BSPP			
	08 = 3/8"	2 = 3 Bar	N = NPT			
	10 = 1/2"	3 = 6 Bar	U = UNF			
	15 = 3/4"					
	20 = 1"					
	25 = 1 1/4"					
	30 = 1 1/2"					

* Standard spring force 1 Bar,
 * Standart yay kuvveti 1 Bar,

Circuit - Şema

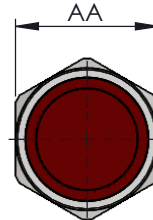
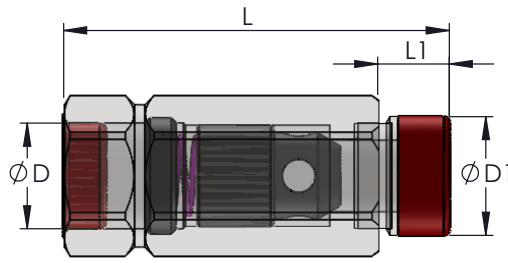


Sectional - Kesit

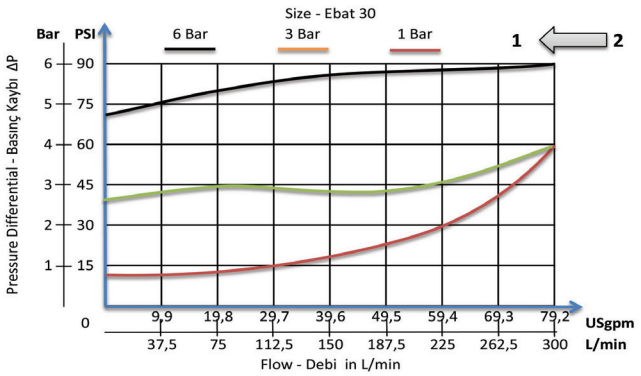
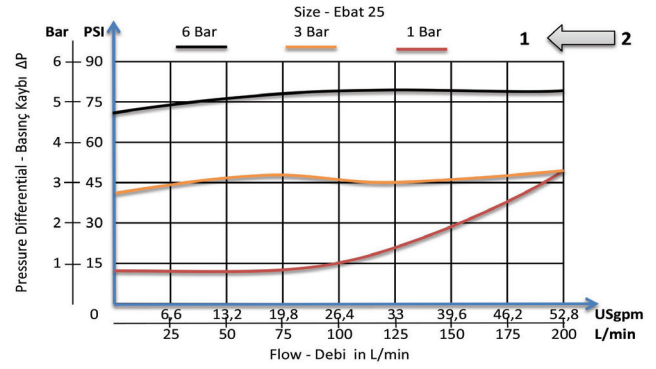
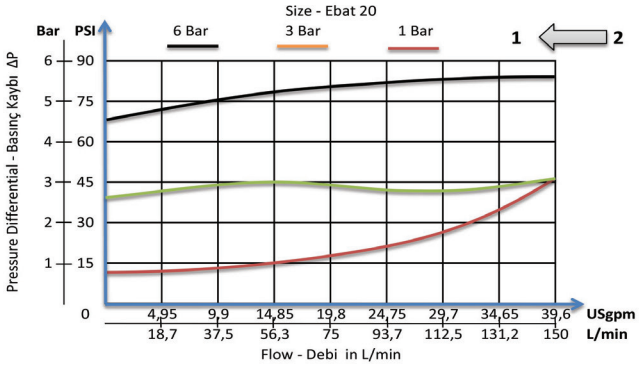
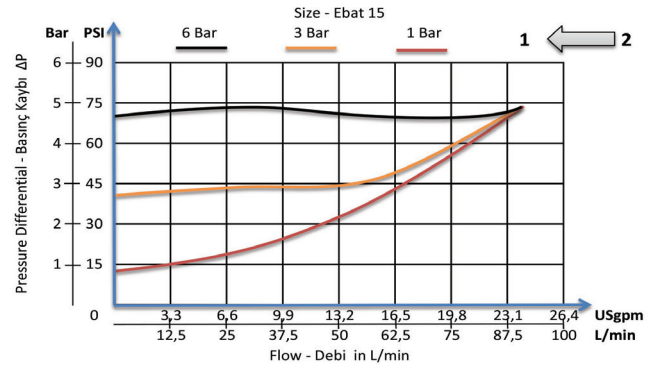
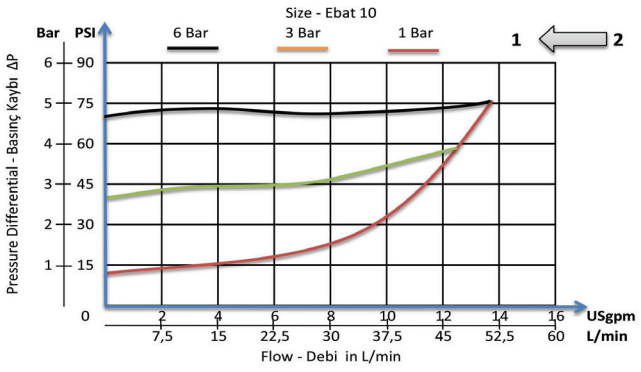
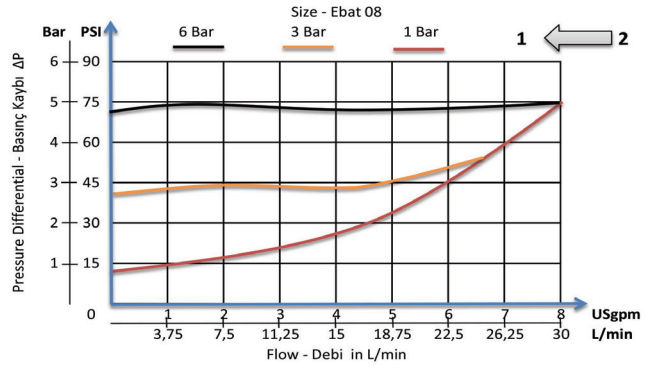
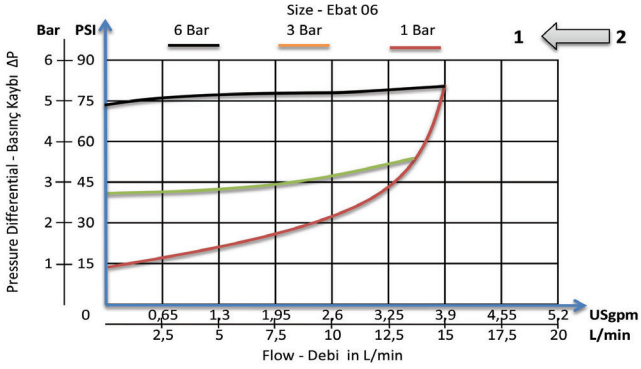


General Parameters and Dimensions (mm) – Genel parametreler ve ölçüler (mm)

Size - Ölçü	Q max	P max	ØD	ØD1	AA	L	L1	Weight Ağırlık
	l/min	Bar	BSPP	BSPP				Kg
HCE-06	15	400	1/4"	1/4"	19	55	11	0,10
HCE-08	30	400	3/8"	3/8"	24	65	12	0,18
HCE-10	50	400	1/2"	1/2"	27	75	14	0,23
HCE-15	90	400	3/4"	3/4"	36	86,5	16	0,45
HCE-20	150	350	1"	1"	41	110	19	0,73
HCE-25	200	350	1 1/4"	1 1/4"	55	123	22	1,5
HCE-30	300	300	1 1/2"	1 1/2"	60	138	22	2



Pressure Drop – Basınç Kaybı



Features

- Suitable for direct in-line installation,
- Body material steel DIN 1.0715,
- Body surface nickel coated,
- Flued viscosity 10 - 500 mm²/s (10-420 cSt),
- For mineral oil ISO 6743/4,
- Leakage 0 - 0,25 cm³/min

Özellikleri

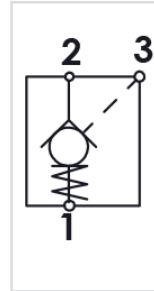
- Direkt hat üzerine montaja uygun,
- Gövde malzemesi çelik DIN 1.0715,
- Gövde yüzeyi nikel kaplama,
- Akışkan viskozitesi 10 - 500 mm²/s (10-420 cSt),
- ISO 6743/4 Mineral yağlar için,
- İç kaçak 0 - 0,25 cm³/min



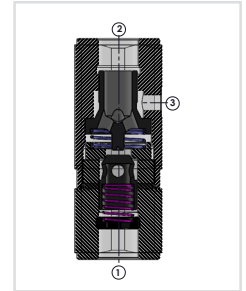
Order Code - Sipariş Kodu

HPCV - 06 - 1 - B			
Model - Tip	Size - Ebat	Spring Force - Yay Kuvveti	Thread Type - Diş Tipi
HPCV	06 = 1/4"	1 = 1 Bar *	B = BSPP
	08 = 3/8"	2 = 3 Bar	N = NPT
	10 = 1/2"	3 = 6 Bar	U = UNF
	15 = 3/4"		
	20 = 1"		

Circuit - Şema



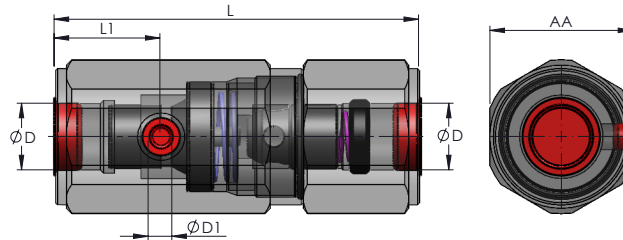
Sectional - Kesit



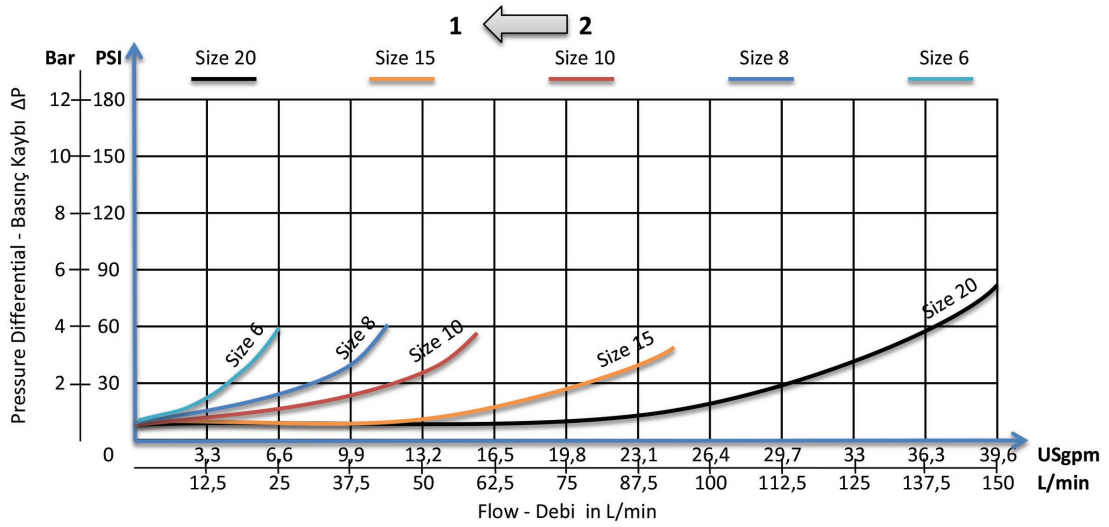
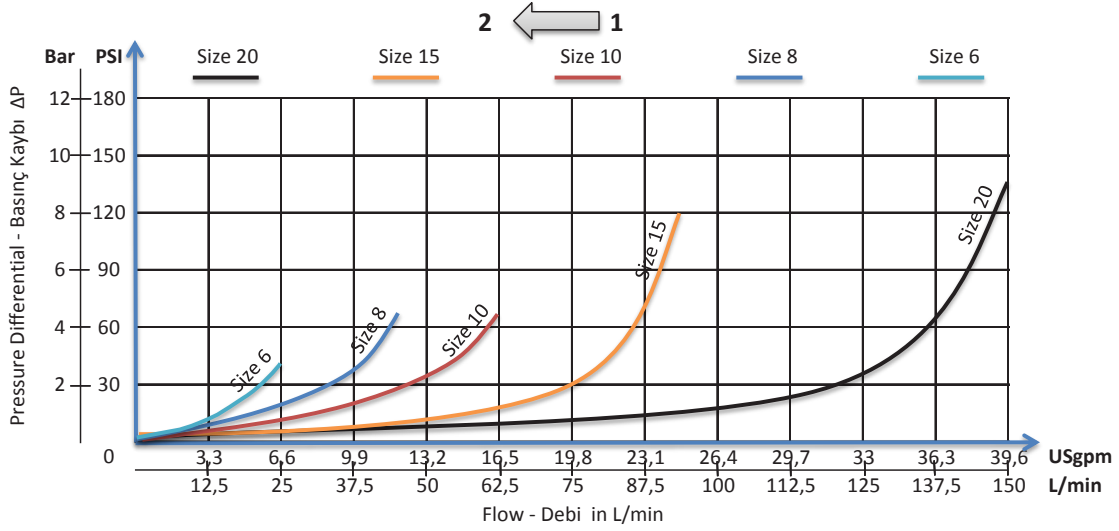
- * Standart spring force 1 Bar,
- * Standart yay kuvveti 1 Bar,

General Parameters and Dimensions (mm) – Genel parametreler ve ölçüler (mm)

Size - Ölçü	Q max l/min	P max Bar	Pilot Ratio Pilot Oranı	ØD BSPP	ØD1 BSPP	AA	B	L	L1	Weight Ağırlık
										Kg
HPCV-06	15	350	1:5.3	1/4"	1/4"	36	35	96	31,5	0,73
HPCV-08	30	350	1:4.4	3/8"	1/4"	41	40	109	31,5	1,00
HPCV-10	50	350	1:4.2	1/2"	1/4"	41	40	122	37	1,10
HPCV-15	90	300	1:4.0	3/4"	1/4"	55	52	132	38	2,10
HPCV-20	150	300	1:4.1	1"	1/4"	65	62	166	48	3,60



Pressure Drop – Basınç Kaybı



Features

- Suitable for direct in-line installation,
- Body material steel DIN 1.7225,
- Body surface nickel coated,
- Flued viscosity 10 - 500 mm²/s (10-420 cSt),
- For mineral oil ISO 6743/4,

Özellikleri

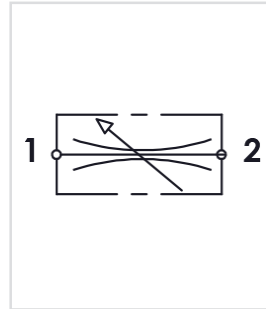
- Direkt hat üzerine montaja uygun,
- Gövde malzemesi çelik DIN 1.7225,
- Gövde yüzeyi nikel kaplama,
- Akışkan viskozitesi 10 - 500 mm²/s (10-420 cSt),
- ISO 6743/4 Mineral yağlar için,



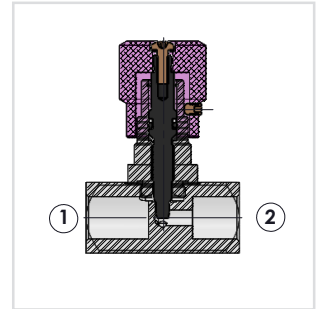
Order Code - Sipariş Kodu

HKV	-	06	-	B
Model - Tip		Size - Ebat		ThreadType Diş tipi
HKV		06 = 1/4"		B = BSPP
		08 = 3/8"		N = NPT
		10 = 1/2"		
		15 = 3/4"		
		20 = 1"		
		25 = 1 1/4"		
		30 = 1 1/2"		

Circuit - Şema

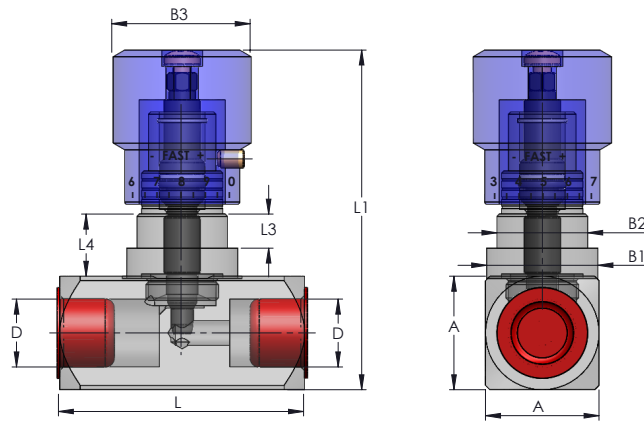


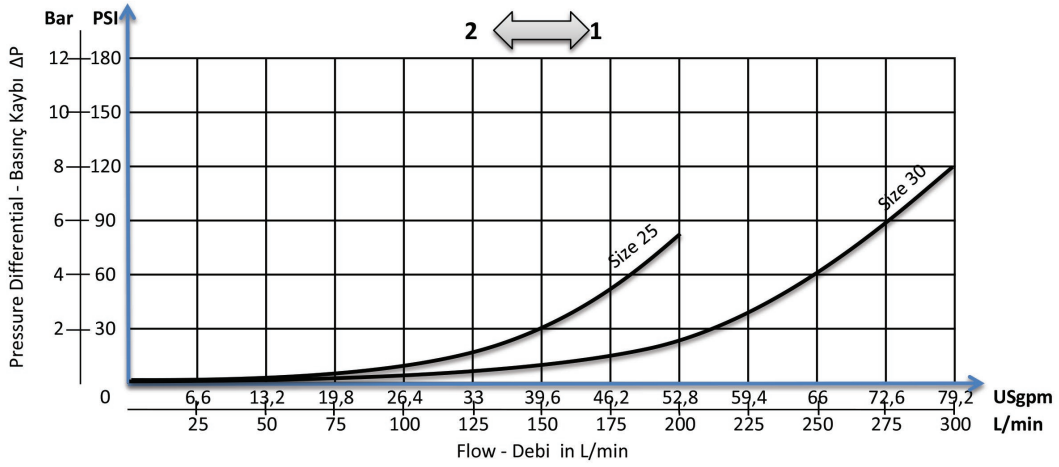
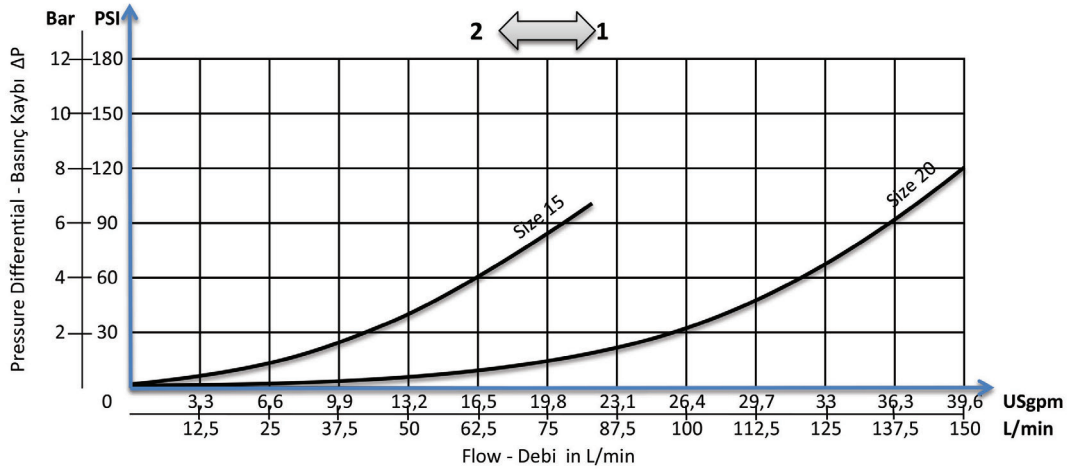
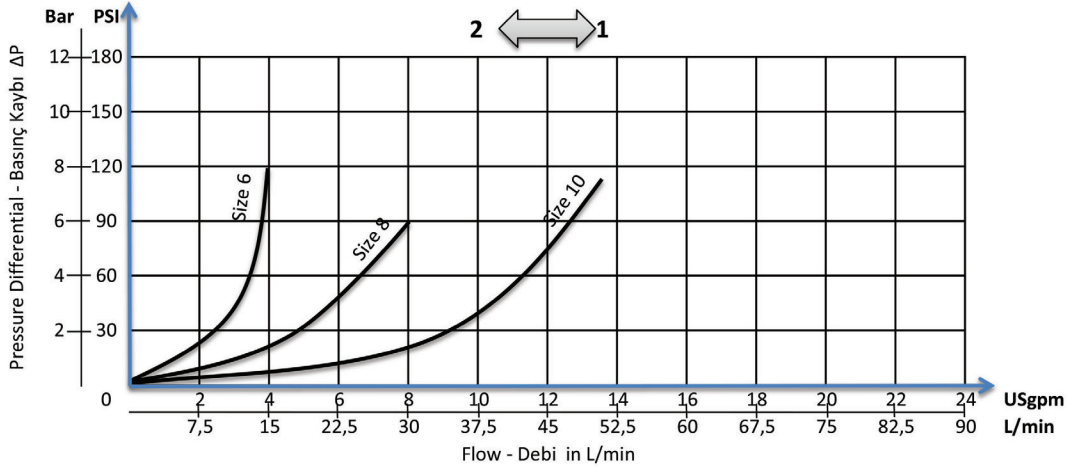
Sectional - Kesit



General Parameters and Dimensions (mm) – Genel parametreler ve ölçüler (mm)

Size - Ölçü	Q max l/min	P max Bar	ØD BSPP	A	B1	B2	B3	L	L1	L3	L4	Weight Ağırlık
												Kg
HKV-06	15	400	1/4"	25	24,5	M20x1,5	30	54	75	7,5	13,5	0,34
HKV-08	30	400	3/8"	25	24,5	M20x1,5	30	54	75	7,5	13,5	0,32
HKV-10	50	300	1/2"	30	29,5	M25x1,5	30	64	80	9,5	13,5	0,50
HKV-15	80	300	3/4"	40	39,5	M35x1,5	41	81	109	15	23	1,16
HKV-20	150	300	1"	45	39,5	M35x1,5	41	102	114	15	23	1,55
HKV-25	200	250	1 1/4"	55	49	M45x1,5	51	102	136	12	23	2,41
HKV-30	300	200	1 1/2"	65	49	M45x1,5	51	102	146	12	23	3,06





Features

- Suitable for direct in-line installation,
- Body material steel DIN 1.7225,
- Body surface nickel coated,
- Flued viscosity 10 - 500 mm²/s (10-420 cSt),
- For mineral oil ISO 6743/4,
- Leakage 0 - 0,25 cm³/min

Özellikleri

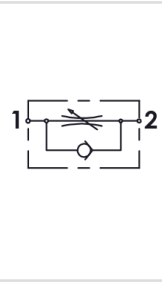
- Direkt hat üzerine montaja uygun,
- Gövde malzemesi çelik DIN 1.7225,
- Gövde yüzeyi nikel kaplama,
- Akışkan viskozitesi 10 - 500 mm²/s (10-420 cSt),
- ISO 6743/4 Mineral yağlar için,
- İç kaçak 0 - 0,25 cm³/min



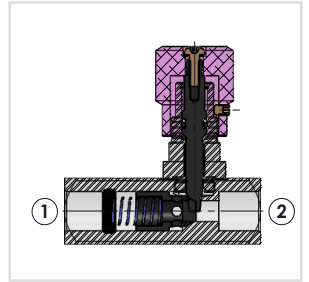
Order Code - Sipariş Kodu

Model - Tip	Size - Ebat	Spring Force Yay Kuvveti	Thread Type Diş Tipi
HKCV	06 = 1/4" 08 = 3/8" 10 = 1/2" 15 = 3/4" 20 = 1" 25 = 1 1/4" 30 = 1 1/2"	1 = 1 Bar * 2 = 3 Bar	B = BSPP N = NPT

Circuit - Şema



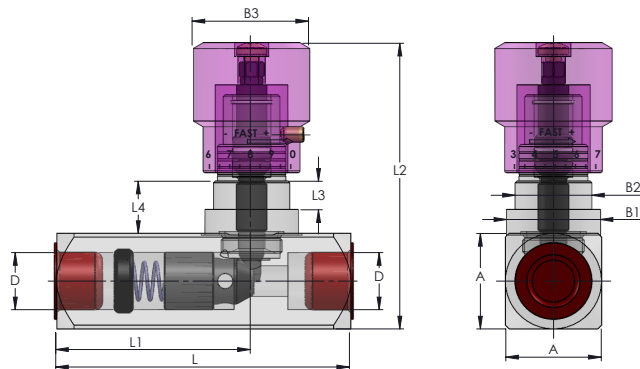
Sectional - Kesit



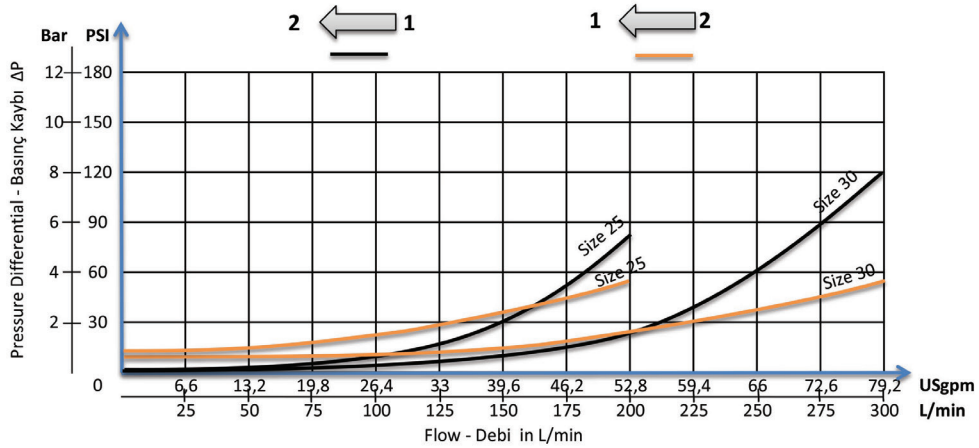
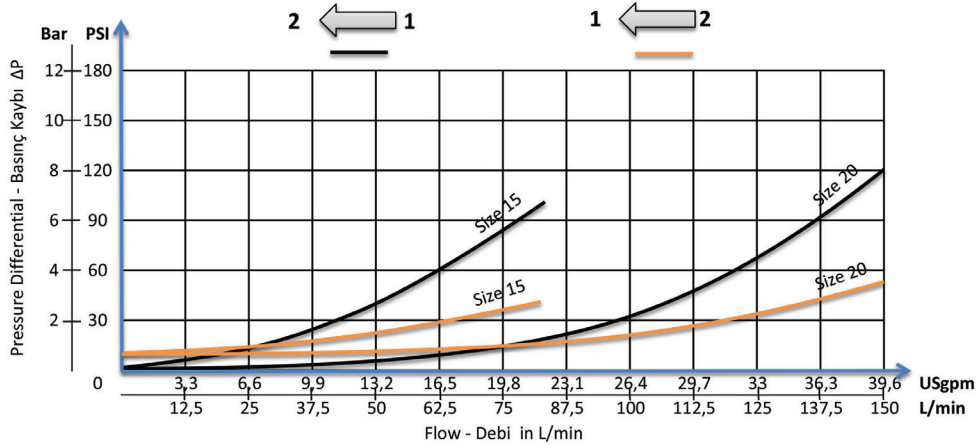
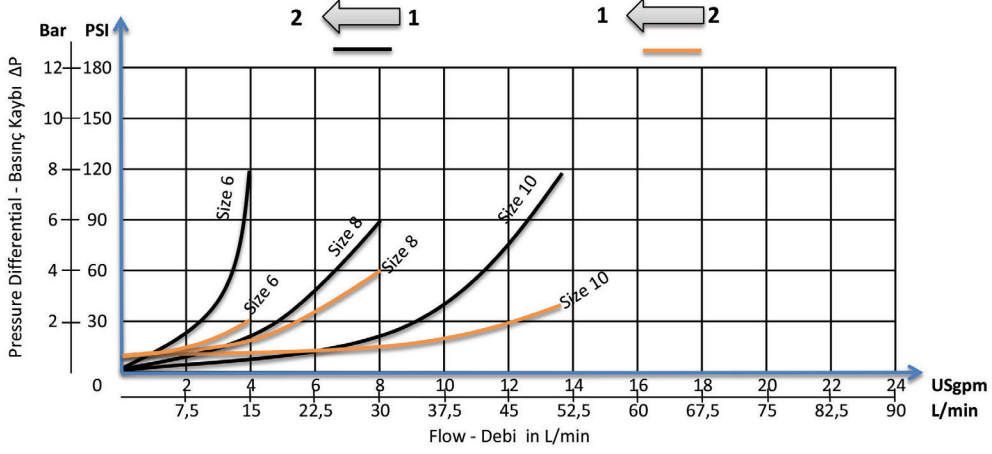
- * Standart spring force 1 Bar,
- * Standart yay kuvveti 1 Bar,

General Parameters and Dimensions (mm) – Genel parametreler ve ölçüler (mm)

Size - Ölçü	Q max	P max	ØD	A	B1	B2	B3	L	L1	L2	L3	L4	Weight Ağırlık
	l/min	Bar	BSPP										Kg
HKCV-06	15	400	1/4"	25	24,5	M20x1,5	30	66	40	75	7,5	13,5	0,40
HKCV-08	30	400	3/8"	25	24,5	M20x1,5	30	77	51	75	7,5	13,5	0,43
HKCV-10	50	300	1/2"	30	29,5	M25x1,5	30	91	59	80	9,5	13,5	0,67
HKCV-15	80	300	3/4"	40	39,5	M35x1,5	41	112,5	72	109	15	23	1,30
HKCV-20	150	300	1"	45	39,5	M35x1,5	41	141	90	114	15	23	2,05
HKCV-25	200	250	1 1/4"	55	49	M45x1,5	51	155	104	136	12	23	3,32
HKCV-30	300	200	1 1/2"	65	49	M45x1,5	51	168	117	146	12	23	4,70



Pressure Drop – Basınç Kaybı

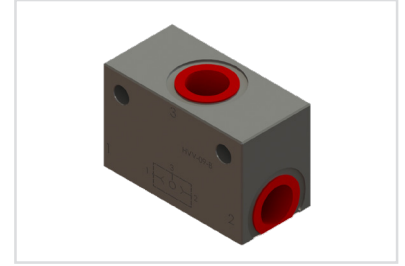


Features

- Suitable for direct in-line installation,
- Body material steel DIN 1.7225,
- Body surface nickel coated,
- Fluid viscosity 10 - 500 mm²/s (10-420 cSt),
- For mineral oil ISO 6743/4,
- Leakage 0 - 0,25 cm³/min

Özellikleri

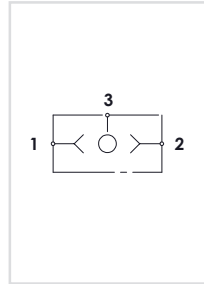
- Direkt hat üzerine montaja uygun,
- Gövde malzemesi çelik DIN 1.7225,
- Gövde yüzeyi nikel kaplama,
- Akışkan viskozitesi 10 - 500 mm²/s (10-420 cSt),
- ISO 6743/4 Mineral yağlar için,
- İç kaçak 0 - 0,25 cm³/min



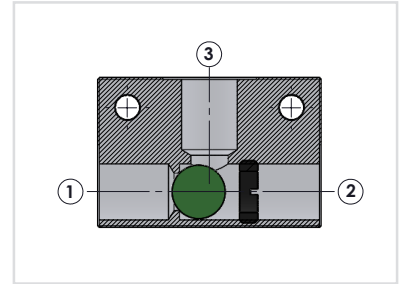
Order Code - Sipariş Kodu

HVV	-	06	-	B
Model - Tip		Size - Ebat		ThreadType Diş Tipi
HVV		06 = 1/4"		B = BSPP
		08 = 3/8"		N = NPT
		10 = 1/2"		U = UNF

Circuit - Şema

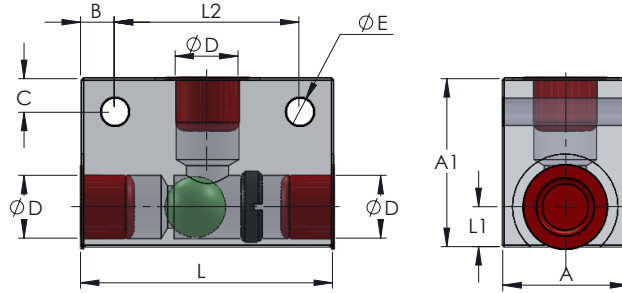


Sectional - Kesit

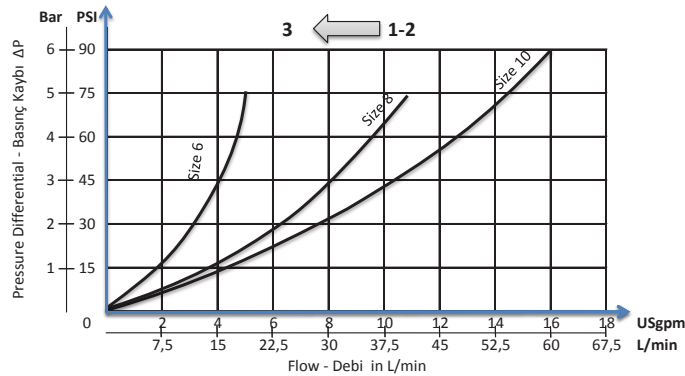


General Parameters and Dimensions (mm) – Genel parametreler ve ölçüler (mm)

Size - Ölçü	Q max l/min	P max Bar	ØD BSPP	A	A1	B	C	E	L	L1	L2	Weight Ağırlık
												Kg
HVV-06	20	350	1/4"	30	35	9	8	6,5	53	9,5	35	0,39
HVV-08	40	350	3/8"	30	40	8	8	6,5	60	9,5	44	0,45
HVV-10	60	350	1/2"	30	50	10	10	8,5	70	15	50	0,60



Pressure Drop – Basınç Kaybı

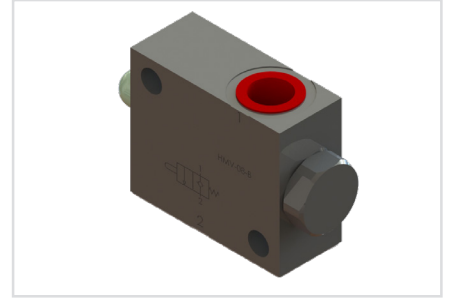


Features

- Suitable for direct in-line installation,
- Body material steel DIN 1.7225,
- Body surface nickel coated,
- Flued viscosity 10 - 500 mm²/s (10-420 cSt),
- For mineral oil ISO 6743/4,
- Leakage 0 - 0,25 cm³/min

Özellikleri

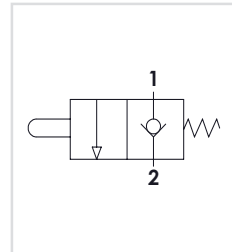
- Direkt hat üzerine montaja uygun,
- Gövde malzemesi çelik DIN 1.7225,
- Gövde yüzeyi nikel kaplama,
- Akışkan viskozitesi 10 - 500 mm²/s (10-420 cSt),
- ISO 6743/4 Mineral yağlar için,
- İç kaçak 0 - 0,25 cm³/min



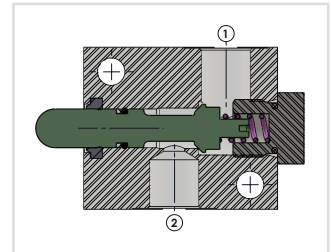
Order Code - Sipariş Kodu

HMV	- 06	- B
Model - Tip	Size - Ebat	Thread Type Diş Tipi
HMV	06 = 1/4"	B = BSPP
	08 = 3/8"	N = NPT
	10 = 1/2"	U = UNF

Circuit - Şema

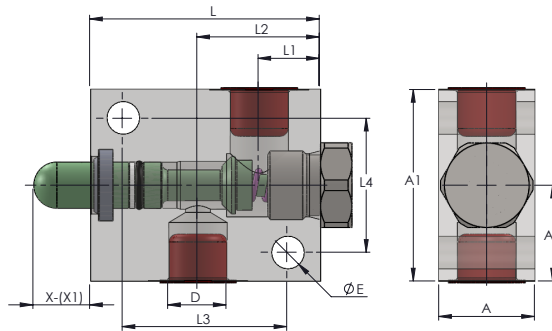


Sectional - Kesit

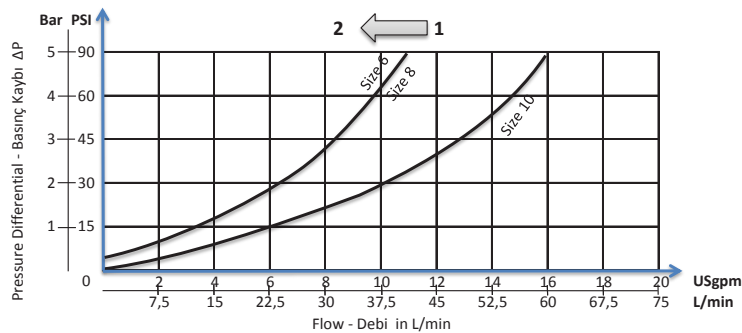


General Parameters and Dimensions (mm) – Genel parametreler ve ölçüler (mm)

Size - Ölçü	Q max l/min	P max Bar	ØD BSPP	A	A1	A2	X-(X1)	ØE	L	L1	L2	L3	L4	Weight Ağırlık
														Kg
HMV-06	40	350	1/4"	25	50	25	14-10	8,5	60	16	32	43	35	0,60
HMV-08	40	350	3/8"	25	50	25	14-10	8,5	60	16	32	43	35	0,53
HMV-10	60	300	1/2"	40	70	35	13-3	8,5	90	30	47,5	60	45	1,83



Pressure Drop – Basınç Kaybı

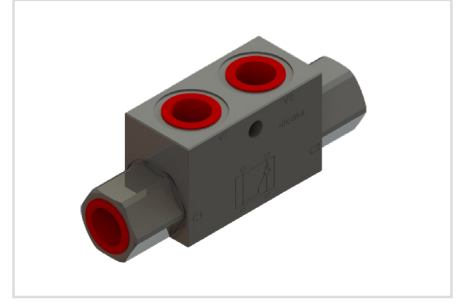


Features

- Suitable for direct in-line installation,
- Body material steel DIN 1.7225,
- Body surface nickel coated,
- Flued viscosity 10 - 500 mm²/s (10-420 cSt),
- For mineral oil ISO 6743/4,
- Leakage 0 - 0,25 cm³/min

Özellikleri

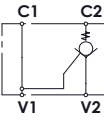
- Direkt hat üzerine montaja uygun,
- Gövde malzemesi çelik DIN 1.7225,
- Gövde yüzeyi nikel kaplama,
- Akışkan viskozitesi 10 - 500 mm²/s (10-420 cSt),
- ISO 6743/4 Mineral yağlar için,
- İç kaçak 0 - 0,25 cm³/min



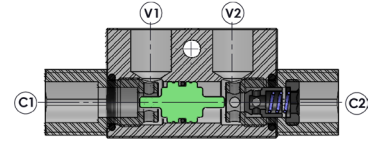
Order Code - Sipariş Kodu

HTK	-	06	-	B
Model - Tip		Size - Ebat		Thread Type Dişi Tipi
HTK =Single		06 = 1/4"		B = BSPP
		08 = 3/8"		N = NPT
		10 = 1/2"		U = UNF
		15 = 3/4"		

Circuit - Şema

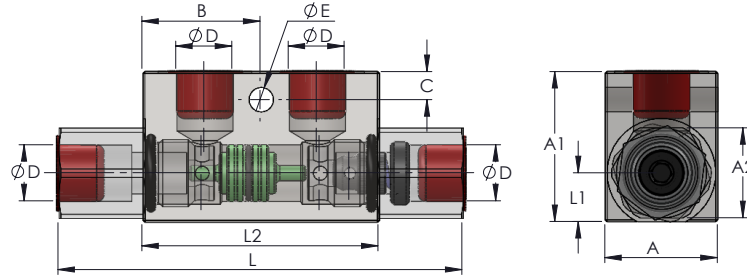


Sectional - Kesit

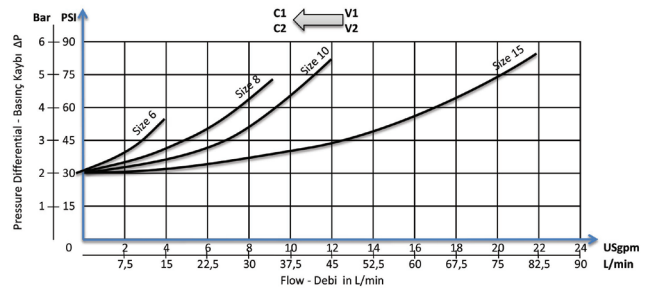
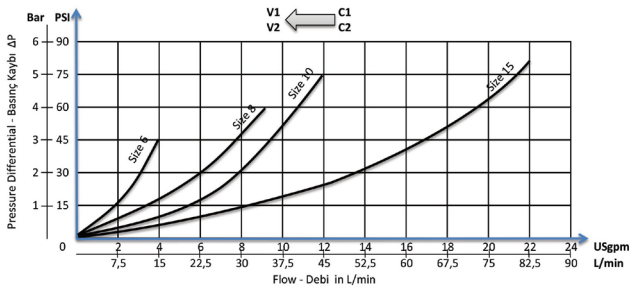


General Parameters and Dimensions (mm) – Genel parametreler ve ölçüler (mm)

Size - Ölçü	Q max	P max	ØD	A	A1	A2	B	C	E	L	L1	L2	Weight Ağırlık
	l/min	Bar	BSPP										Kg
HTK-06	15	320	1/4"	30	40	24	31,5	7,5	6,5	108	22,5	63	0,60
HTK-08	35	320	3/8"	30	40	24	31,5	7,5	6,5	108	22,5	63	0,55
HTK-10	45	300	1/2"	30	50	27	41	15	6,5	145	31,5	82	1,23
HTK-15	70	300	3/4"	40	60	36	50	10	8,5	192	46	100	1,90



Pressure Drop – Basınç Kaybı



Features

- Suitable for direct in-line installation,
- Body material steel DIN 1.7225,
- Body surface nickel coated,
- Flued viscosity 10 - 500 mm²/s (10-420 cSt),
- For mineral oil ISO 6743/4,
- Leakage 0 - 0,25 cm³/min

Özellikleri

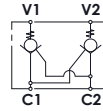
- Direkt hat üzerine montaja uygun,
- Gövde malzemesi çelik DIN 1.7225,
- Gövde yüzeyi nikel kaplama,
- Akışkan viskozitesi 10 - 500 mm²/s (10-420 cSt),
- ISO 6743/4 Mineral yağlar için,
- İç kaçak 0 - 0,25 cm³/min



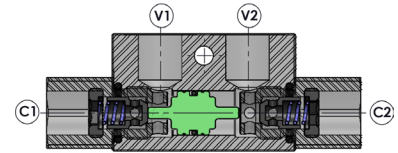
Order Code - Sipariş Kodu

HCK	-	06	-	B
Model - Tip		Size - Ebat		ThreadType Dişi Tipi
HCK=Double		06 = 1/4"		B = BSP
		08 = 3/8"		N = NPT
		10 = 1/2"		G = BSPP
		15 = 3/4"		

Circuit - Şema

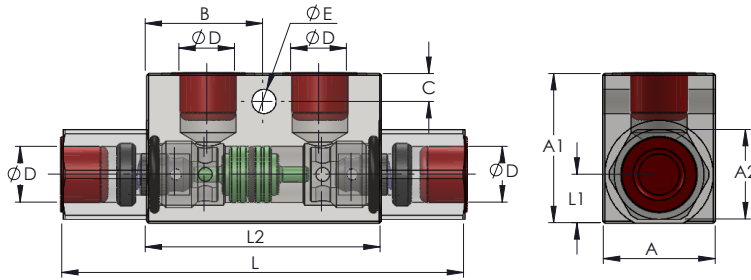


Sectional - Kesit

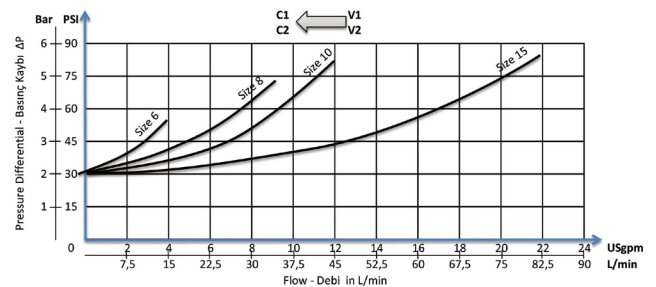
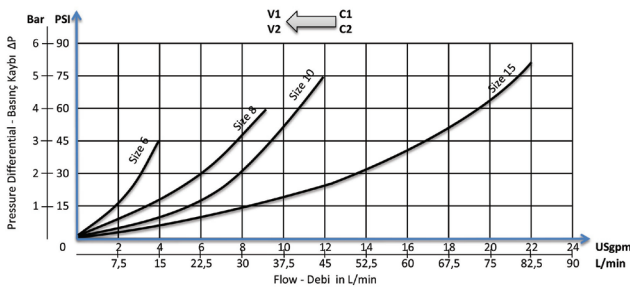


General Parameters and Dimensions (mm) – Genel parametreler ve ölçüler (mm)

Size - Ölçü	Q max	P max	ØD	A	A1	A2	B	C	E	L	L1	L2	Weight Ağırlık
	l/min	Bar	BSPP										Kg
HCK-06	15	320	1/4"	30	40	24	31,5	7,5	6,5	108	22,5	63	0,67
HCK-08	35	320	3/8"	30	40	24	31,5	7,5	6,5	108	22,5	63	0,63
HCK-10	45	300	1/2"	40	50	27	41	15	6,5	145	31,5	82	1,30
HCK-15	70	300	3/4"	40	60	36	50	10	8,5	192	46	100	2,05



Pressure Drop – Basınç Kaybı



Features

- Suitable for direct in-line installation,
- Body material steel DIN 1.7225,
- Body surface nickel coated,
- Flued viscosity 10 - 500 mm²/s (10-420 cSt),
- For mineral oil ISO 6743/4,
- Leakage 0 - 0,25 cm³/min

Özellikleri

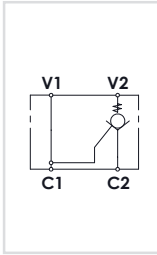
- Direkt hat üzerine montaja uygun,
- Gövde malzemesi çelik DIN 1.7225,
- Gövde yüzeyi nikel kaplama,
- Akışkan viskozitesi 10 - 500 mm²/s (10-420 cSt),
- ISO 6743/4 Mineral yağlar için,
- İç kaçak 0 - 0,25 cm³/min



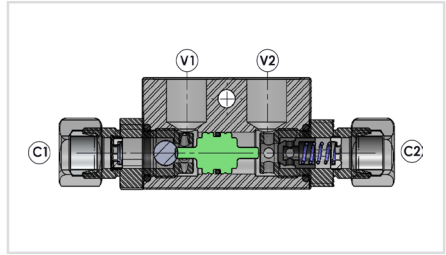
Order Code - Sipariş Kodu

RTK	-	06	-	B
Model - Tip		Size - Ebat		ThreadType Dişi Tipi
RTK=Single		06 = 1/4"		B = BSPP
		08 = 3/8"		N = NPT
				U=UNF

Circuit - Şema

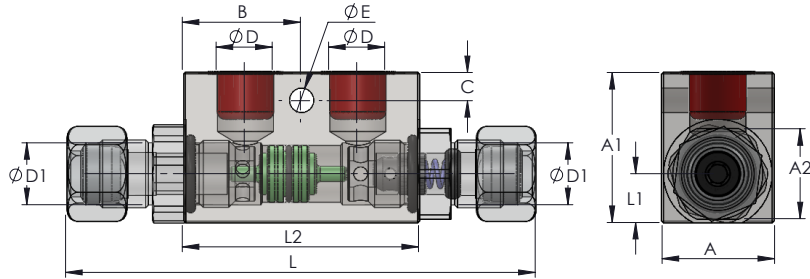


Sectional - Kesit

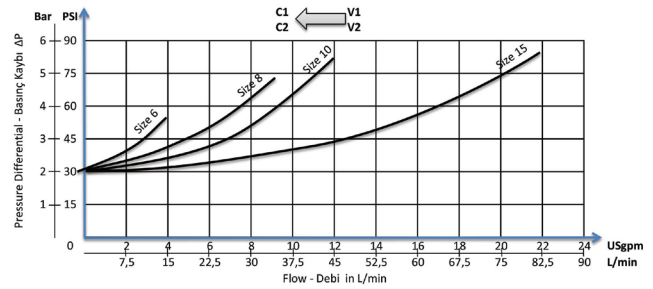
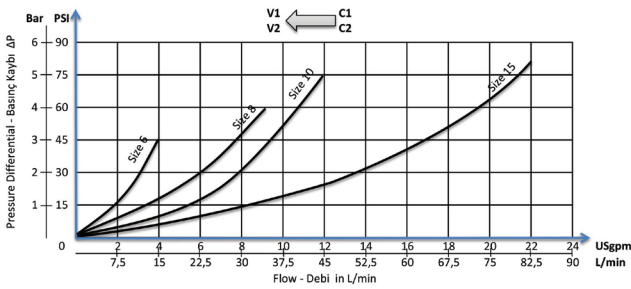


General Parameters and Dimensions (mm) – Genel parametreler ve ölçüler (mm)

Size - Ölçü	Q max	P max	ØD	ØD1	A	A1	A2	B	C	E	L	L1	L2	Weight Ağırlık
	l/min	Bar	BSP	M18x1,5										Kg
RTK-06	15	320	1/4"	12	30	40	24	31,5	7,5	6,5	108	22,5	63	0,60
RTK-08	35	320	3/8"	12	30	40	24	31,5	7,5	6,5	108	22,5	63	0,55



Pressure Drop – Basınç Kaybı



Features

- Suitable for direct in-line installation,
- Body material steel DIN 1.7225,
- Body surface nickel coated,
- Flued viscosity 10 - 500 mm²/s (10-420 cSt),
- For mineral oil ISO 6743/4,
- Leakage 0 - 0,25 cm³/min"

Özellikleri

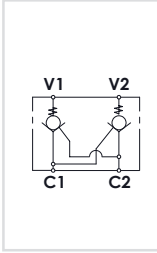
- Direkt hat üzerine montaja uygun,
- Gövde malzemesi çelik DIN 1.7225,
- Gövde yüzeyi nikel kaplama,
- Akışkan viskozitesi 10 - 500 mm²/s (10-420 cSt),
- ISO 6743/4 Mineral yağlar için,
- İç kaçak 0 - 0,25 cm³/min"



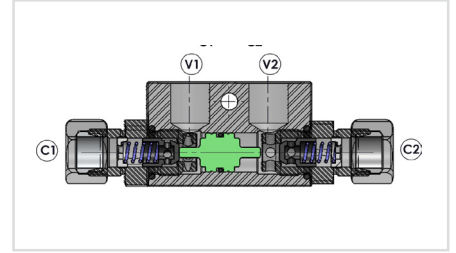
Order Code - Sipariş Kodu

RCK	-	06	-	B
Model - Tip		Size - Ebat		Thread Type Dişi Tipi
RCK =Single		06 = 1/4"		B = BSPP
		08 = 3/8"		N = NPT
				U = UNF

Circuit - Şema

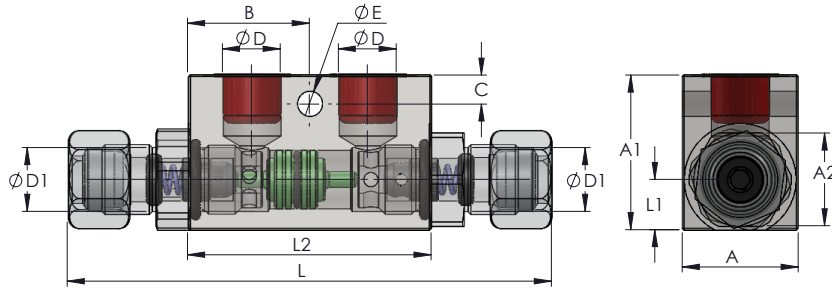


Sectional - Kesit

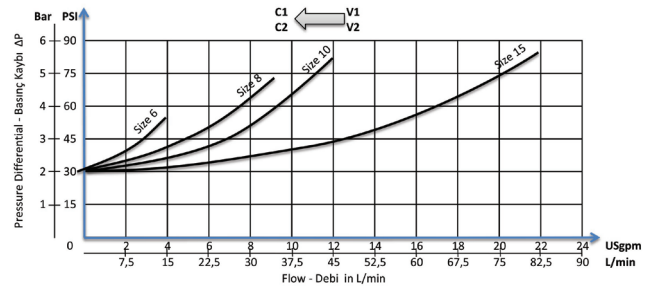
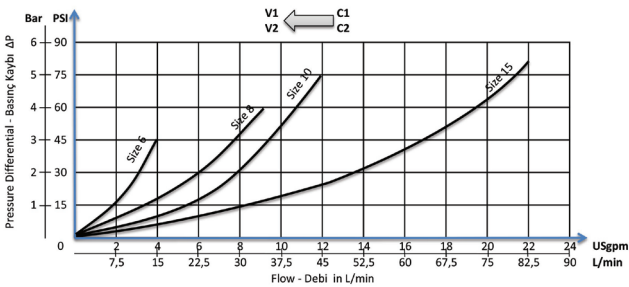


General Parameters and Dimensions (mm) – Genel parametreler ve ölçüler (mm)

Size - Ölçü	Q max	P max	ØD	ØD1	A	A1	A2	B	C	E	L	L1	L2	Weight Ağırlık
	l/min	Bar	BSP	M18x1,5										Kg
RCK-06	15	320	1/4"	12	30	40	24	31,5	7,5	6,5	108	22,5	63	0,67
RCK-08	35	320	3/8"	12	30	40	24	31,5	7,5	6,5	108	22,5	63	0,63



Pressure Drop – Basınç Kaybı

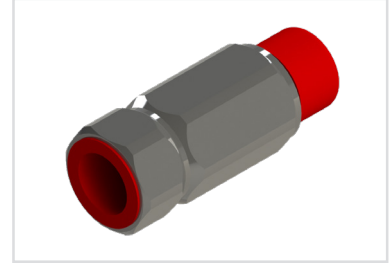


Features

- Suitable for direct in-line installation,
- Body material steel DIN 1.7225,
- Body surface nickel coated,
- Flued viscosity 10 - 500 mm²/s (10-420 cSt),
- For mineral oil ISO 6743/4,
- Leakage 0 - 0,25 cm³/min

Özellikleri

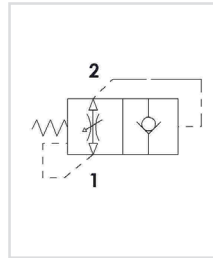
- Direkt hat üzerine montaja uygun,
- Gövde malzemesi çelik DIN 1.7225,
- Gövde yüzeyi nikel kaplama,
- Akışkan viskozitesi 10 - 500 mm²/s (10-420 cSt),
- ISO 6743/4 Mineral yağlar için,
- İç kaçak 0 - 0,25 cm³/min



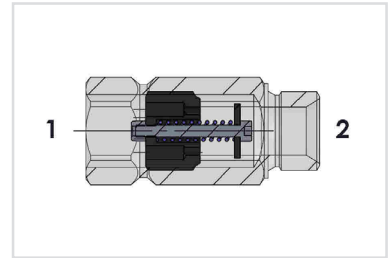
Order Code - Sipariş Kodu

HPK - Model - Tip	06 - Size - Ebat	B - Thread Type Dişi Tipi
HPK = Cartridge	06 = 1/4"	B = BSPP
HP = Cartridge	08 = 3/8"	N = NPT
With Body	10 = 1/2"	U = UNF
	15 = 3/4"	

Circuit - Şema

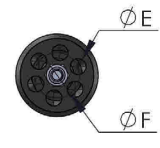
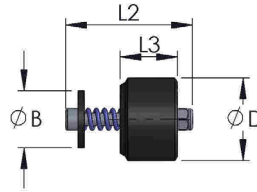
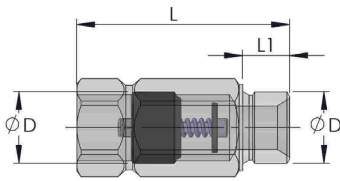


Sectional - Kesit

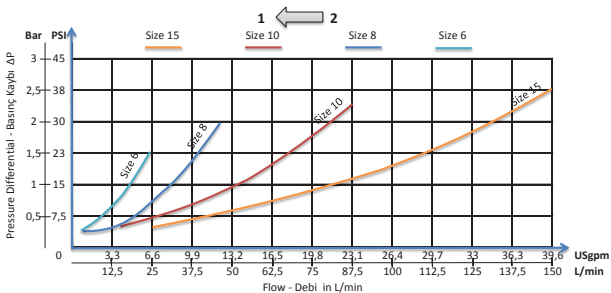


General Parameters and Dimensions (mm) – Genel parametreler ve ölçüler (mm)

Size - Ölçü	Q max	P max	ØD	AA	B	E	F	L	L1	L2	L3	Weight Ağırlık
	l/min	Bar	BSP									Kg
HP-06	25	350	1/4"	19	10.5	2,5	8	50	11	19	8	0,15
HP-08	50	350	3/8"	22	13	3	10	58	12	23	11	0,20
HP-10	80	350	1/2"	27	15	4	11.5	66	14	29	13	0,25
HP-15	150	350	3/4"	32	18	5	14,5	78	16	40	18	0,30



Pressure Drop – Basınç Kaybı



Features

- Suitable for direct in-line installation,
- Body material steel DIN 1.7225,
- Body surface nickel coated,
- Fluid viscosity 10 - 500 mm²/s (10-420 cSt),
- For mineral oil ISO 6743/4,

Özellikleri

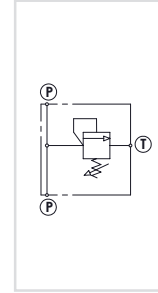
- Direkt hat üzerine montaja uygun,
- Gövde malzemesi çelik DIN 1.7225,
- Gövde yüzeyi nikel kaplama,
- Akışkan viskozitesi 10 - 500 mm²/s (10-420 cSt),
- ISO 6743/4 Mineral yağlar için,



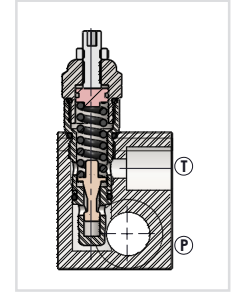
Order Code - Sipariş Kodu

BEV	-	40	2	0	-	08
Model - Tip		Displacement	Spring Type	Setting Head		Size
BEV = Body		40 = 40 lt	1= 10-90 Bar 2= 20-200 Bar 3= 70-350 Bar	0 = Set Screw 1 = Knob		08 = 3/8" 10 = 1/2"

Circuit - Şema

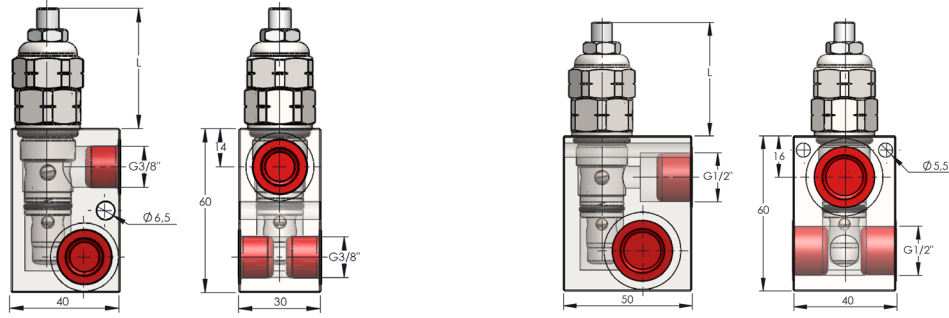


Sectional - Kesit

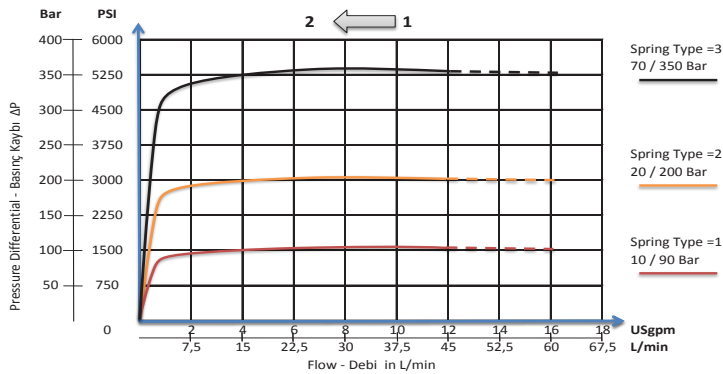


General Parameters and Dimensions (mm) – Genel parametreler ve ölçüler (mm)

Size - Ölçü	Q max	P max	ØD	L - max	Valve Type	Weight Ağırlık
	l/min	Bar	BSPP		Valf tipi	Kg
BEV-4020-08	40	350	3/8"	44	EV 40	0,55
BEV-4020-10	40	350	1/2"	44	EV 40	0,80



Pressure Drop – Basınç Kaybı

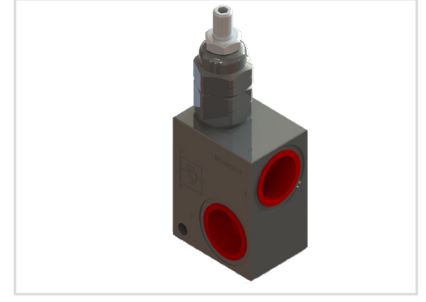


Features

- Suitable for direct in-line installation,
- Body material steel DIN 1.7225,
- Body surface nickel coated,
- Fluid viscosity 10 - 500 mm²/s (10-420 cSt),
- For mineral oil ISO 6743/4,

Özellikleri

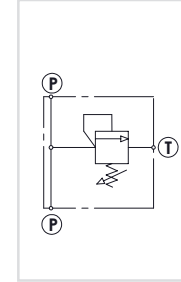
- Direkt hat üzerine montaja uygun,
- Gövde malzemesi çelik DIN 1.7225,
- Gövde yüzeyi nikel kaplama,
- Akışkan viskozitesi 10 - 500 mm²/s (10-420 cSt),
- ISO 6743/4 Mineral yağlar için,



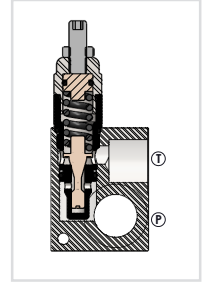
Order Code - Sipariş Kodu

BEV	-	80	2	0	-	10
Model - Tip	Displacement	Spring Type	Setting Head	Size		
BEV = Body	80 = 80 lt	1= 10-90 Bar 2= 20-220 Bar 3= 50-350 Bar	0 = Set Screw 1 = Knob	10 = 1/2" 15 = 3/4"		

Circuit - Şema

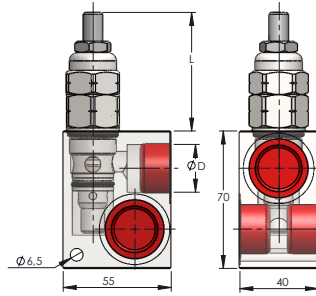


Sectional - Kesit

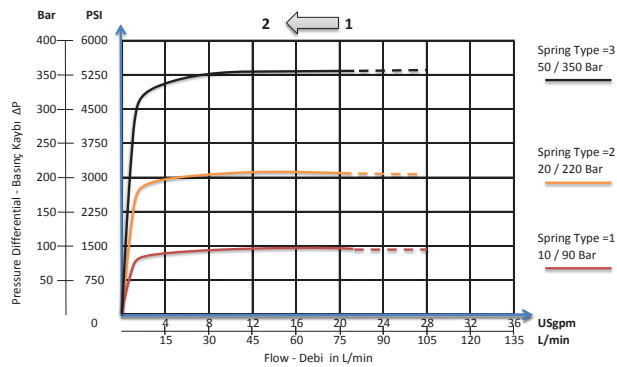


General Parameters and Dimensions (mm) – Genel parametreler ve ölçüler (mm)

Size - Ölçü	Q max	P max	ØD	L - max	Valve Type Valf tipi	Weight Ağırlık
	l/min	Bar	BSPP			Kg
BEV-8020-10	80	350	1/2"	60	EV 80	1,10
BEV-8020-15	80	350	3/4"	60	EV 80	1,00



Pressure Drop – Basınç Kaybı

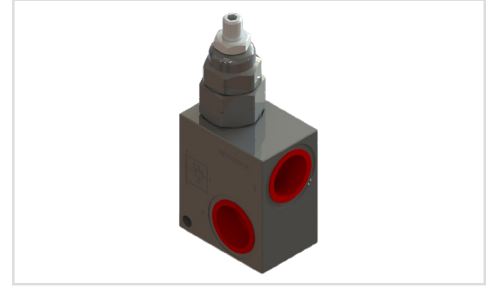


Features

- Suitable for direct in-line installation,
- Body material steel DIN 1.7225,
- Body surface nickel coated,
- Flued viscosity 10 - 500 mm²/s (10-420 cSt),
- For mineral oil ISO 6743/4,

Özellikleri

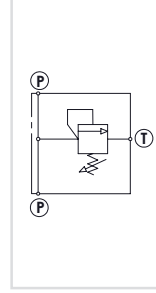
- Direkt hat üzerine montaja uygun,
- Gövde malzemesi çelik DIN 1.7225,
- Gövde yüzeyi nikel kaplama,
- Akışkan viskozitesi 10 - 500 mm²/s (10-420 cSt),
- ISO 6743/4 Mineral yağlar için,



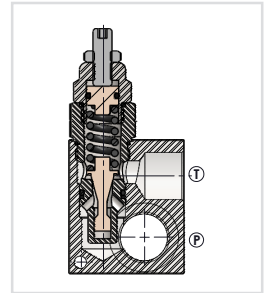
Order Code - Sipariş Kodu

BEV -	120	2	0	-	15
Model - Tip	Displacement	Spring Type	Setting Head		Size
BEV = Body	120 = 120 lt	1= 10-90 Bar 2= 20-200 Bar 3= 40-350 Bar	0 = Set Screw 1 = Knob		15 = 3/4" 20 = 1"

Circuit - Şema



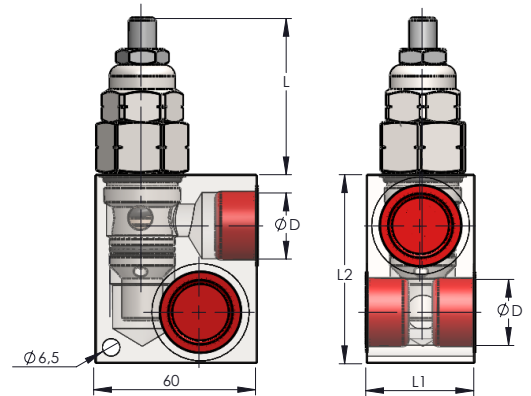
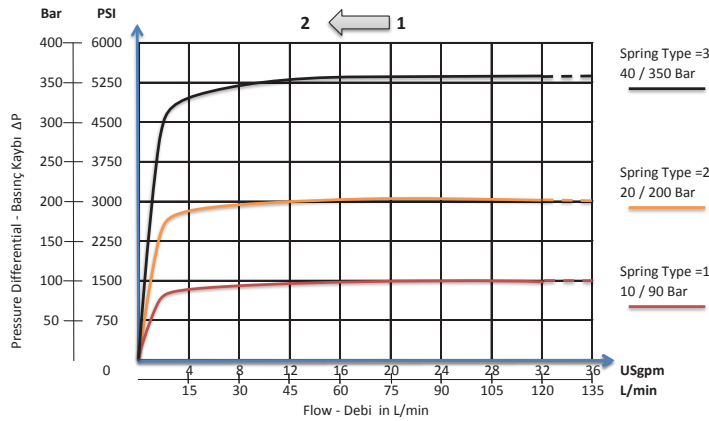
Sectional - Kesit



General Parameters and Dimensions (mm) – Genel parametreler ve ölçüler (mm)

Size - Ölçü	Q max	P max	ØD	L - max	L1	L2	ValveType Valf tipi	Weight Ağırlık
	l/min	Bar	BSPP					Kg
BEV-12020-15	120	350	3/4"	61	40	70	EV 120	1,20
BEV-12020-20	120	350	1"	61	50	80	EV 120	1,60

Pressure Drop – Basınç Kaybı

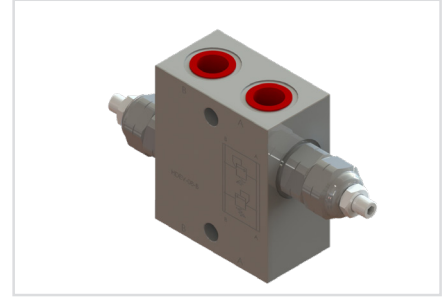


Features

- Suitable for direct in-line installation,
- Body material steel DIN 1.7225,
- Body surface nickel coated,
- Fluid viscosity 10 - 500 mm²/s (10-420 cSt),
- For mineral oil ISO 6743/4,

Özellikleri

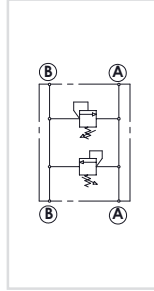
- Direkt hat üzerine montaja uygun,
- Gövde malzemesi çelik DIN 1.7225,
- Gövde yüzeyi nikel kaplama,
- Akışkan viskozitesi 10 - 500 mm²/s (10-420 cSt),
- ISO 6743/4 Mineral yağlar için,



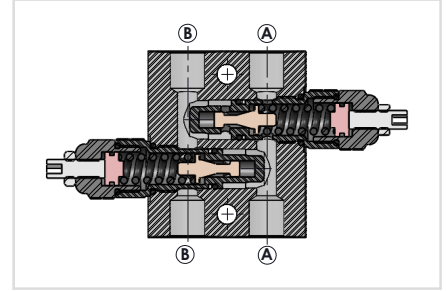
Order Code - Sipariş Kodu

HDEV	-	08	-	B
Model - Tip		Size		Female Thread
HDEV = Body		08 = 3/8"		B = BSPP
		10 = 1/2"		N = NPT
				U = UNF

Circuit - Şema



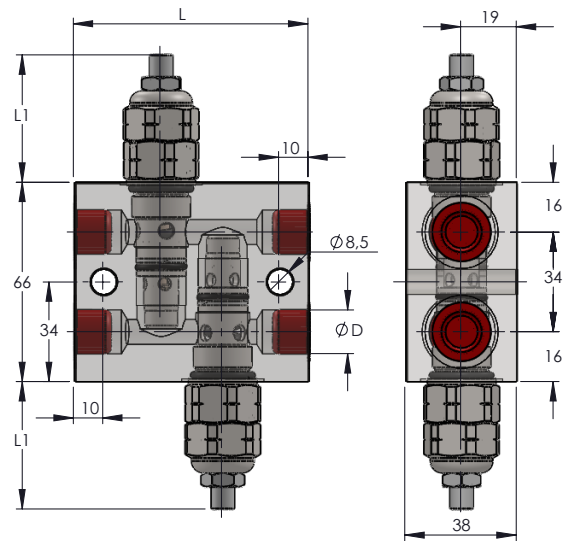
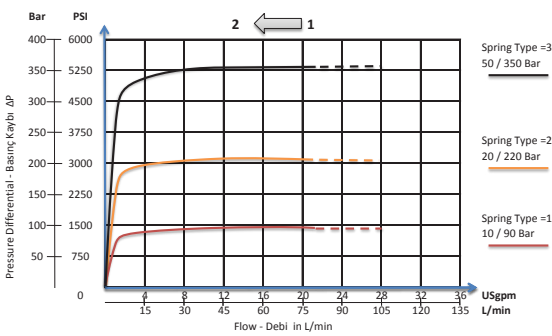
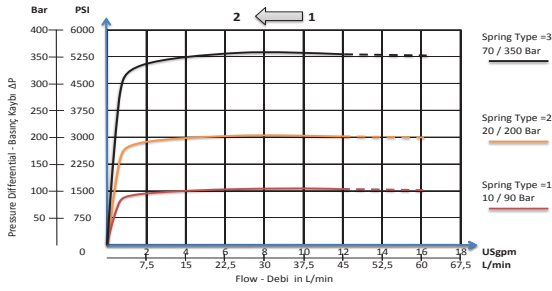
Sectional - Kesit



General Parameters and Dimensions (mm) – Genel parametreler ve ölçüler (mm)

Size - Ölçü	Q max	P max	ØD	Valve Type	L	L1 - max	Weight
	l/min	Bar	BSPP	Valf tipi			Kg
HDEV-4020-08	40	350	3/8"	EV 40	80	44	1,55
HDEV-8020-10	80	350	1/2"	EV 80	96	60	1,85

Pressure Drop – Basınç Kaybı





ORIGINAL
VALVE

HIDROLİK PLEYT

HYDRAULIC MANIFOLD



Features

- Body material alluminum 6013 - T4 (210 Bar 3000 PSI)
- Body surface eloxal (Anodic) coated,
- Flued viscosity 10 - 500 mm²/s (10-420 cSt),
- For mineral oil ISO 6743/4

Özellikleri

- Gövde malzemesi alüminyum 6013-T4 (210 Bar 3000 PSI)
- Yüzey eloksal (Anodik) kaplama,
- Akışkan vizkozitesi 10 - 500 mm²/s (10-420 cSt),
- ISO 6743/4 Mineral yağlar için.

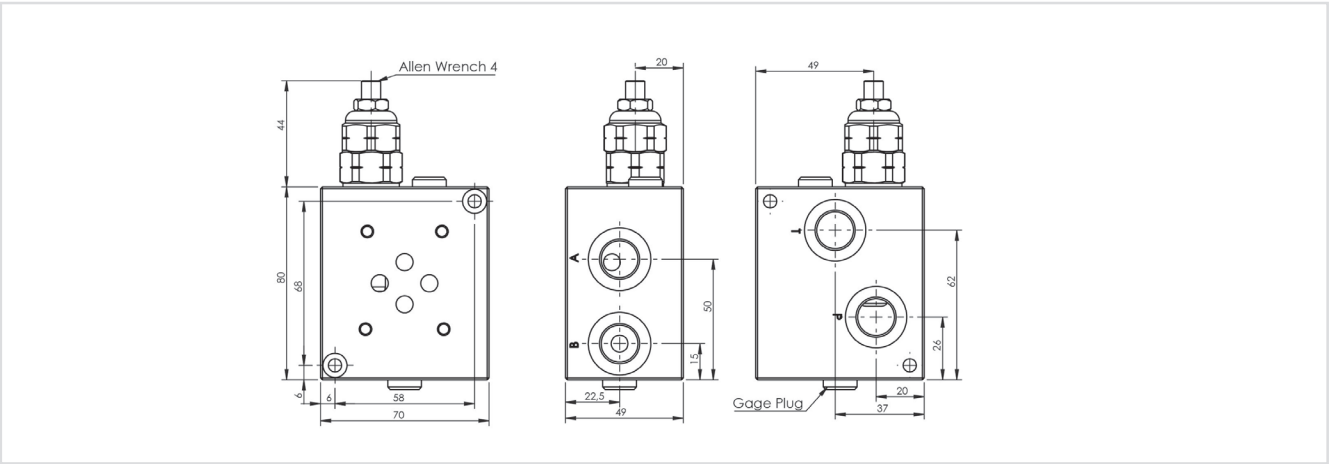


Order Code - Sipariş Kodu

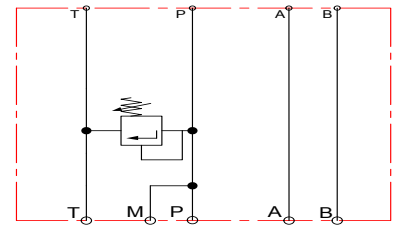
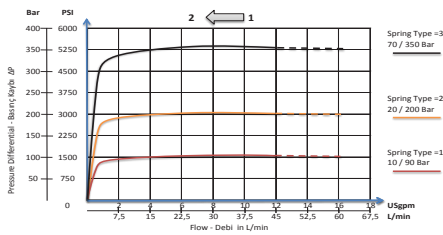
MPE	-	06	-	1		A
Model - Tip		Size		No. Of Station Çıkış Sayısı		Material Malzeme
MPE		06 = 1/4"		1 Station 1 Çıkış		A-Alluminum Aluminyum

General Parameters and Dimensions (mm) – Genel parametreler ve ölçüler (mm)

Size - Ölçü	Q max	P max	ØP-T	ØA-B	ØGA	Weight Ağırlık
	l/min	Bar	BSPP	BSPP	BSPP	Kg
MPE-06-1A	40	210	3/8"	3/8"	1/8"	0,85



Pressure Drop And Hydraulic Circuit - Basınç Kaybı ve Hidrolik Şema



Features

- Body material alluminum 6013 - T4 (210 Bar 3000 PSI)
- Body surface eloxal (Anodic) coated,
- Flued viscosity 10 - 500 mm²/s (10-420 cSt),
- For mineral oil ISO 6743/4

Özellikleri

- Gövde malzemesi alüminyum 6013-T4 (210 Bar 3000 PSI)
- Yüzey eloksal (Anodik) kaplama,
- Akışkan viskozitesi 10 - 500 mm²/s (10-420 cSt),
- ISO 6743/4 Mineral yağlar için.

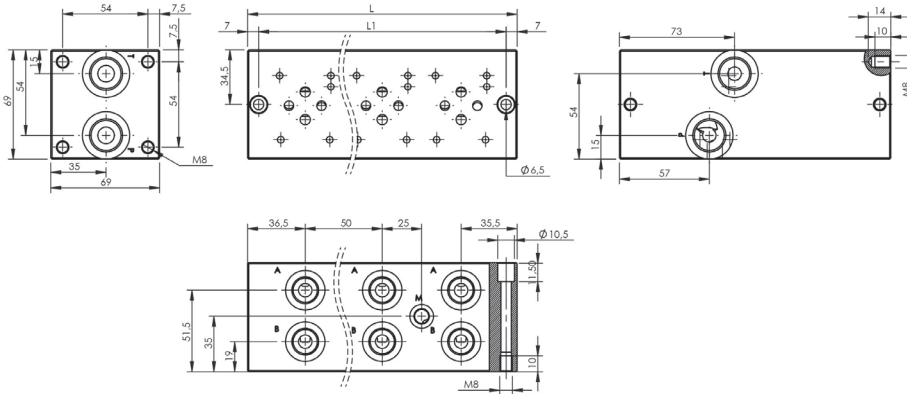


Order Code - Sipariş Kodu

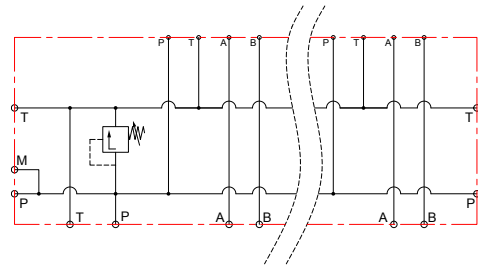
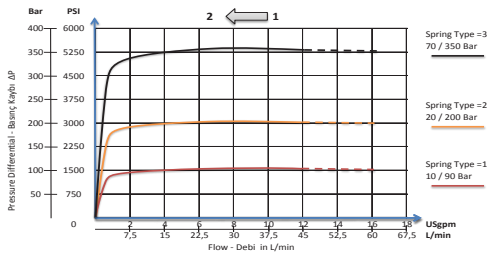
MPE	- 06	- 2	A
Model - Tip	Size	No. Of Station Çıkış Sayısı	Material Malzeme
MPE	06 = 1/4"	2-8 Station 2-8 Çıkış	A-Alluminum Alüminyum

General Parameters and Dimensions (mm) – Genel parametreler ve ölçüler (mm)

Size - Ölçü	Q max l/min	P max Bar	ØP-T BSPP	ØA-B BSPP	ØGA BSPP	L mm	L1 mm	Weight Ağırlık	
								Kg	
MPE-06-2A	40	210	1/2"	3/8"	1/8"	122	108	1,5	
MPE-06-3A	40	210	1/2"	3/8"	1/8"	172	158	2,1	
MPE-06-4A	40	210	1/2"	3/8"	1/8"	222	208	2,7	
MPE-06-5A	40	210	1/2"	3/8"	1/8"	272	258	3,3	
MPE-06-6A	40	210	1/2"	3/8"	1/8"	322	308	3,9	
MPE-06-7A	40	210	1/2"	3/8"	1/8"	372	358	4,5	
MPE-06-8A	40	210	1/2"	3/8"	1/8"	422	408	5,1	



Pressure Drop And Hydraulic Circuit - Basınç Kaybı ve Hidrolik Şema



Features

- Body material aluminum 6013 - T4 (210 Bar 3000 PSI)
- Body surface eloxal (Anodic) coated,
- Flued viscosity 10 - 500 mm²/s (10-420 cSt),
- For mineral oil ISO 6743/4

Özellikleri

- Gövde malzemesi alüminyum 6013-T4 (210 Bar 3000 PSI)
- Yüzey eloksal (Anodik) kaplama,
- Akışkan vizkozitesi 10 - 500 mm²/s (10-420 cSt),
- ISO 6743/4 Mineral yağlar için.

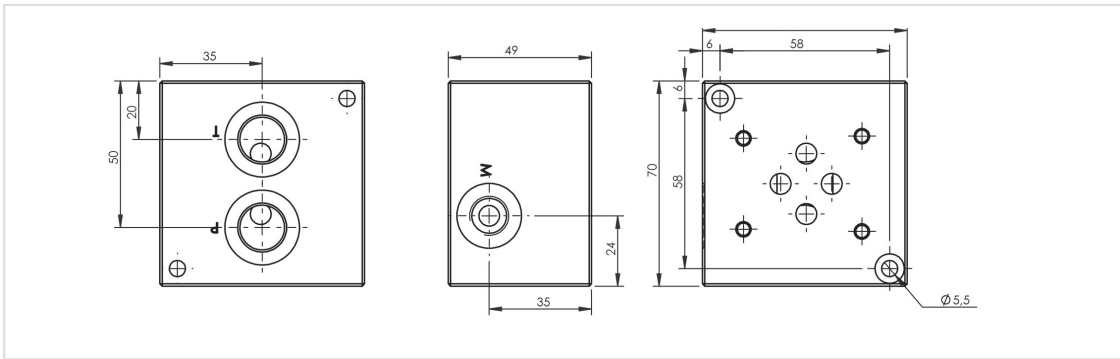


Order Code - Sipariş Kodu

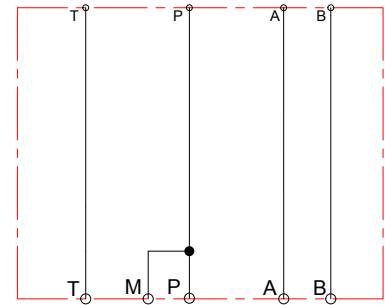
MPD	- 06	- 1	A
Model - Tip	Size	No. Of Station Çıkış Sayısı	Material Malzeme
MPD	06 = 1/4"	1 Station 1 Çıkış	A-Alluminum Alüminyum

General Parameters and Dimensions (mm) – Genel parametreler ve ölçüler (mm)

Size - Ebat	Q max l/min	P max Bar	ØP-T BSPP	ØA-B BSPP	ØGA BSPP	Weight Ağırlık Kg
MPD-06-1A	40	210	3/8"	3/8"	1/8"	0,60



Hydraulic Circuit - Hidrolik Şema

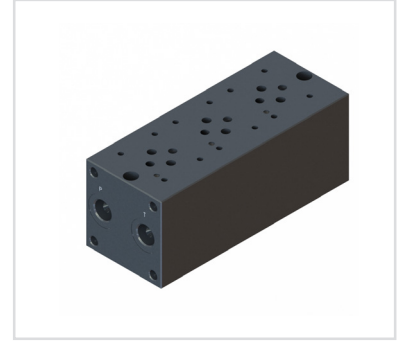


Features

- Body material alluminum 6013 - T4 (210 Bar 3000 PSI)
- Body surface eloxal (Anodic) coated,
- Flued viscosity 10 - 500 mm²/s (10-420 cSt),
- For mineral oil ISO 6743/4

Özellikleri

- Gövde malzemesi alüminyum 6013-T4 (210 Bar 3000 PSI)
- Yüzey eloksal (Anodik) kaplama,
- Akışkan vizkozitesi 10 - 500 mm²/s (10-420 cSt),
- ISO 6743/4 Mineral yağlar için

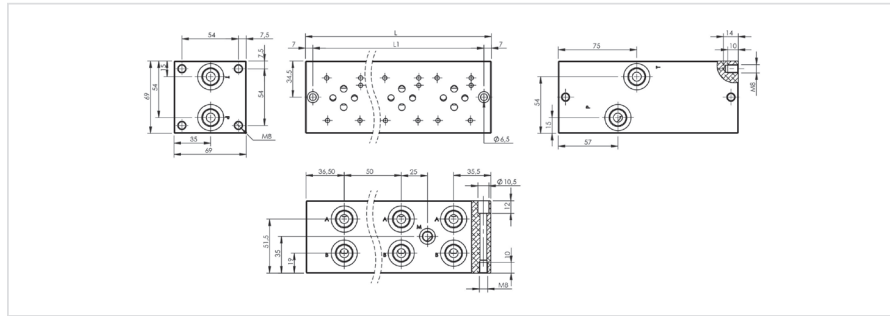


Order Code - Sipariş Kodu

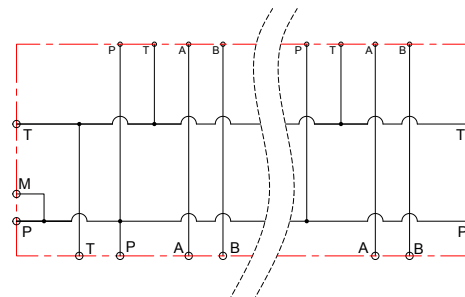
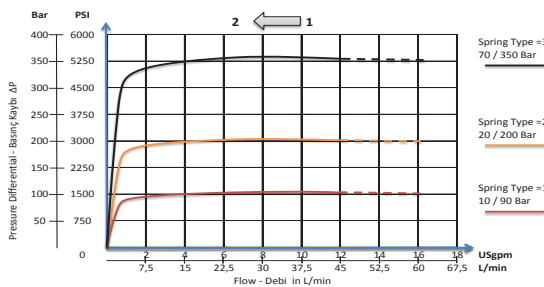
MPD	- 06	- 2	A
Model - Tip	Size	No. Of Station Çıkış Sayısı	Material Malzeme
MPD	06 = 1/4"	2-8 Station 2-8 Çıkış	A-Alluminum Alüminyum

General Parameters and Dimensions (mm) – Genel parametreler ve ölçüler (mm)

Size - Ölçü	Q max	P max	ØP-T	ØA-B	ØGA	L mm	L1 mm	Weight Ağırlık
	l/min	Bar	BSPP	BSPP	BSPP			Kg
MPD-06-2A	40	210	1/2"	3/8"	1/8"	122	108	1,35
MPD-06-3A	40	210	1/2"	3/8"	1/8"	172	158	1,95
MPD-06-4A	40	210	1/2"	3/8"	1/8"	222	208	2,55
MPD-06-5A	40	210	1/2"	3/8"	1/8"	272	258	3,15
MPD-06-6A	40	210	1/2"	3/8"	1/8"	322	308	3,75
MPD-06-7A	40	210	1/2"	3/8"	1/8"	372	358	4,35
MPD-06-8A	40	210	1/2"	3/8"	1/8"	422	408	4,95



Pressure Drop And Hydraulic Circuit - Basınç Kaybı ve Hidrolik Şema



Features

- Body material alluminum 6013 - T4 (210 Bar 3000 PSI)
- Body surface eloxal (Anodic) coated,
- Flued viscosity 10 - 500 mm2/s (10-420 cSt),
- For mineral oil ISO 6743/4

Özellikleri

- Gövde malzemesi alüminyum 6013-T4 (210 Bar 3000 PSI)
- Yüzey eloksal (Anodik) kaplama,
- Akışkan viskozitesi 10 - 500 mm2/s (10-420 cSt),
- ISO 6743/4 Mineral yağlar için.

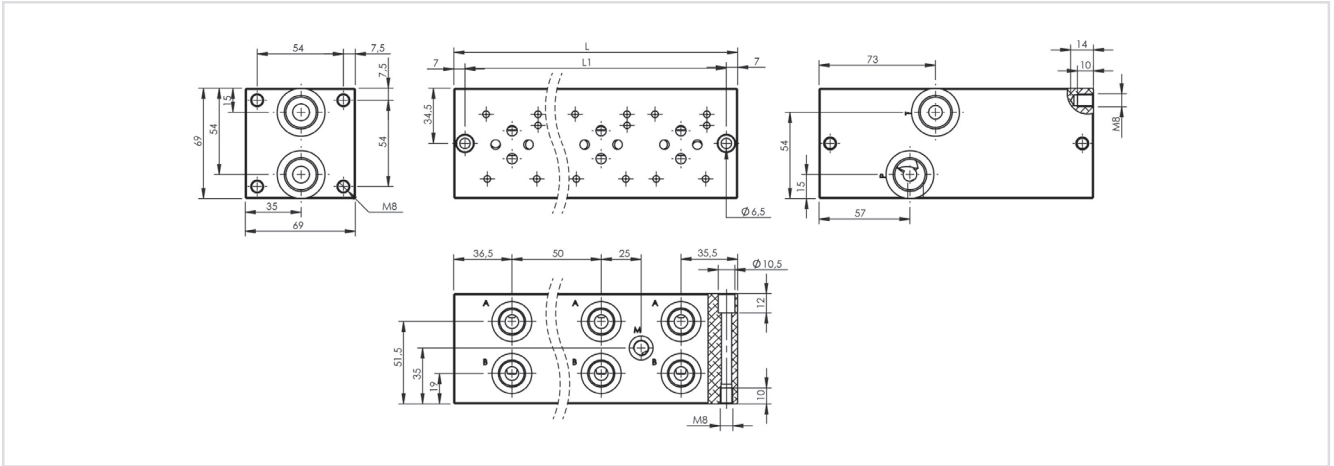


Order Code - Sipariş Kodu

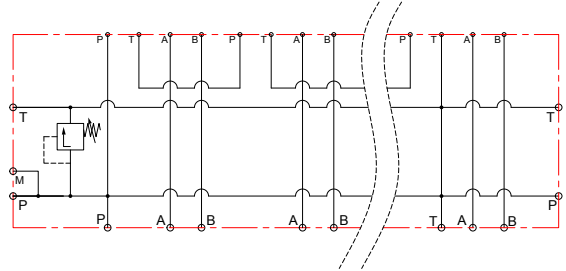
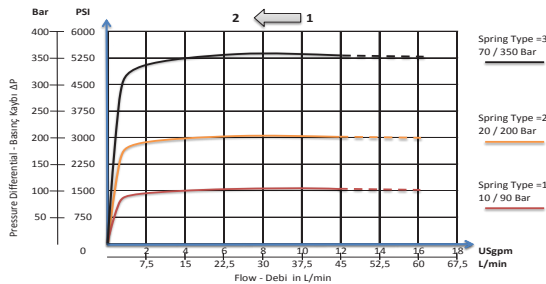
MSE Model - Tip	- 06 Size	- 2 No. Of Station Çıkış Sayısı	A Material Malzeme
MSE	06 = 1/4"	2-8 Station 2-8 Çıkış	A-Alluminum Alüminyum

General Parameters and Dimensions (mm) – Genel parametreler ve ölçüler (mm)

Size - Ölçü	Q max l/min	P max Bar	ØP-T BSPP	ØA-B BSPP	ØGA BSPP	L mm	L1 mm	Weight Ağırlık Kg
MSE-06-2A	40	210	1/2"	3/8"	1/8"	122	108	1,5
MSE-06-3A	40	210	1/2"	3/8"	1/8"	172	158	2,1
MSE-06-4A	40	210	1/2"	3/8"	1/8"	222	208	2,7
MSE-06-5A	40	210	1/2"	3/8"	1/8"	272	258	3,3
MSE-06-6A	40	210	1/2"	3/8"	1/8"	322	308	3,9
MSE-06-7A	40	210	1/2"	3/8"	1/8"	372	358	4,5
MSE-06-8A	40	210	1/2"	3/8"	1/8"	422	408	5,1



Pressure Drop And Hydraulic Circuit - Basınç Kaybı ve Hidrolik Şema

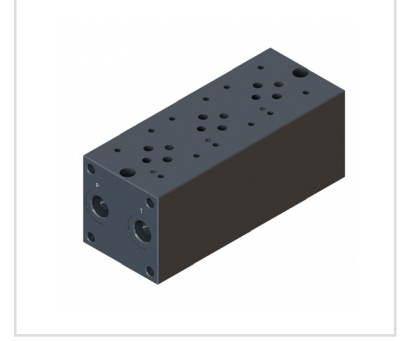


Features

- Body material alluminum 6013 - T4 (210 Bar 3000 PSI)
- Body surface eloxal (Anodic) coated,
- Flued viscosity 10 - 500 mm²/s (10-420 cSt),
- For mineral oil ISO 6743/4

Özellikleri

- Gövde malzemesi alüminyum 6013-T4 (210 Bar 3000 PSI)
- Yüzey eloksal (Anodik) kaplama,
- Akışkan viskozitesi 10 - 500 mm²/s (10-420 cSt),
- ISO 6743/4 Mineral yağlar için.

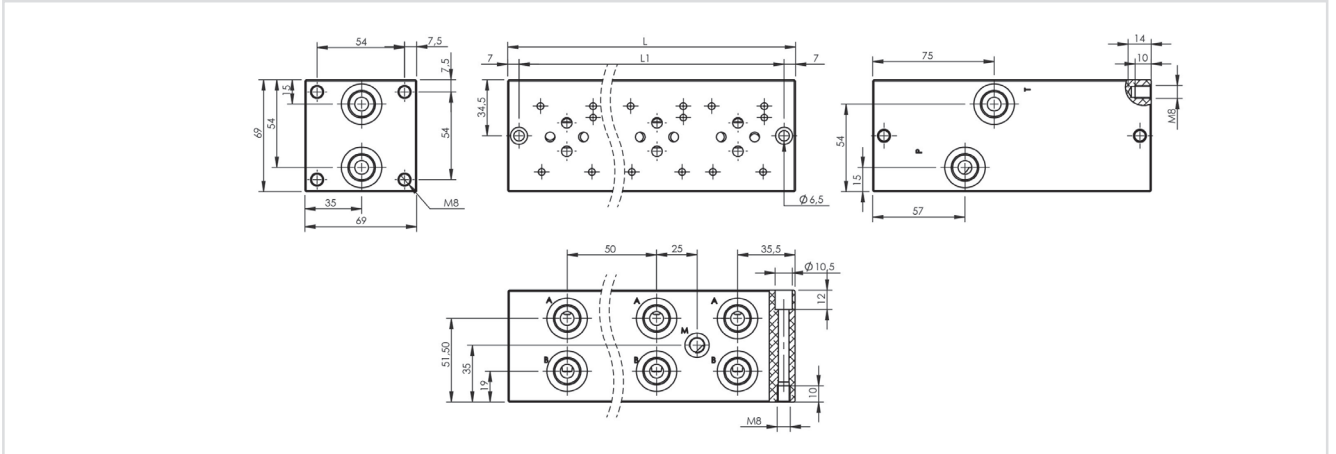


Order Code - Sipariş Kodu

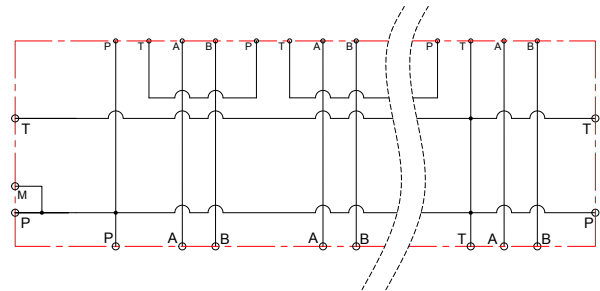
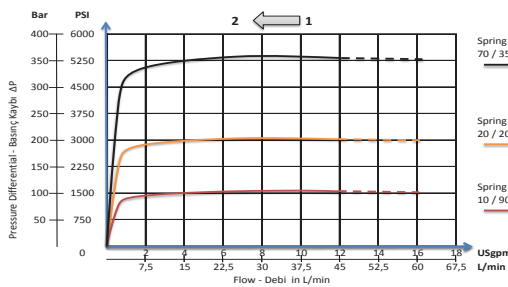
MSD	-	06	-	2	-	A
Model - Tip		Size		No. Of Station Çıkış Sayısı		Material Malzeme
MSD		06 = 1/4"		2-8 Station 2-8 Çıkış		A-Alluminum Alüminyum

General Parameters and Dimensions (mm) – Genel parametreler ve ölçüler (mm)

Size - Ölçü	Q max	P max	ØP-T	ØA-B	ØGA	L mm	L1 mm	Weight Ağırlık Kg
	l/min	Bar	BSPP	BSPP	BSPP			
MSD-06-2A	40	210	1/2"	3/8"	1/8"	122	108	1,35
MSD-06-3A	40	210	1/2"	3/8"	1/8"	172	158	1,95
MSD-06-4A	40	210	1/2"	3/8"	1/8"	222	208	2,55
MSD-06-5A	40	210	1/2"	3/8"	1/8"	272	258	3,15
MSD-06-6A	40	210	1/2"	3/8"	1/8"	322	308	3,75
MSD-06-7A	40	210	1/2"	3/8"	1/8"	372	358	4,35
MSD-06-8A	40	210	1/2"	3/8"	1/8"	422	408	4,95



Pressure Drop And Hydraulic Circuit - Basınç Kaybı ve Hidrolik Şema



Features

- Body material alluminum 6013 - T4 (210 Bar 3000 PSI)
- Body surface eloxal(Anodic) coated,
- Flued viscosity 10 - 500 mm²/s (10-420 cSt),
- For mineral oil ISO 6743/4

Özellikleri

- Gövde malzemesi alüminyum 6013-T4 (210 Bar 3000 PSI)
- Yüzey eloksal (Anodik) kaplama,
- Akışkan vizkozitesi 10 - 500 mm²/s (10-420 cSt),
- ISO 6743/4 Mineral yağlar için.

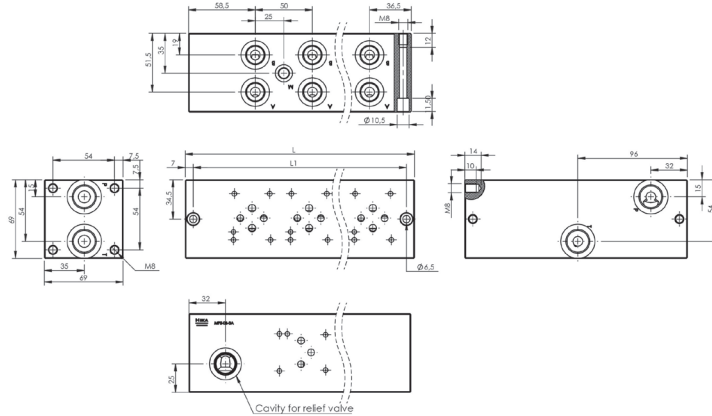


Order Code - Sipariş Kodu

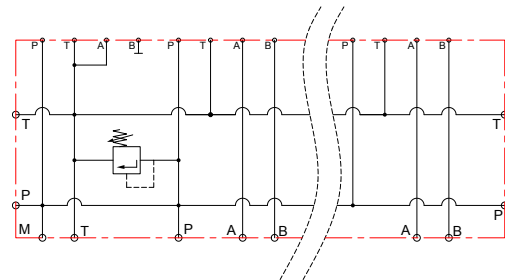
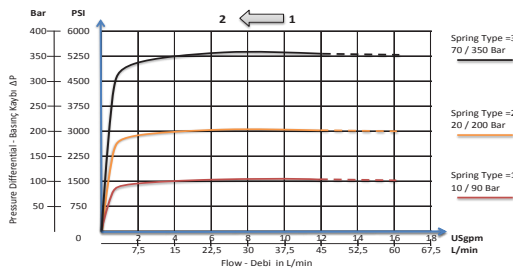
MPS	- 06	- 2	A
Model - Tip	Size	No. Of Station Çıkış Sayısı	Material Malzeme
MPS	06 = 1/4"	2-8 Station 2-8 Çıkış	A-Alluminum Aluminyum

General Parameters and Dimensions (mm) – Genel parametreler ve ölçüler (mm)

Size - Ölçü	Q max	P max	ØP-T	ØA-B	ØGA	L mm	L1 mm	Weight Ağırlık Kg
	l/min	Bar	BSPP	BSPP	BSPP			
MPS-06-2A	40	210	1/2"	3/8"	1/8"	145	131	1,75
MPS-06-3A	40	210	1/2"	3/8"	1/8"	195	181	2,35
MPS-06-4A	40	210	1/2"	3/8"	1/8"	245	231	2,95
MPS-06-5A	40	210	1/2"	3/8"	1/8"	295	281	3,55
MPS-06-6A	40	210	1/2"	3/8"	1/8"	345	331	4,15
MPS-06-7A	40	210	1/2"	3/8"	1/8"	395	381	4,75
MPS-06-8A	40	210	1/2"	3/8"	1/8"	445	431	5,35



Pressure Drop And Hydraulic Circuit - Basınç Kaybı ve Hidrolik Şema

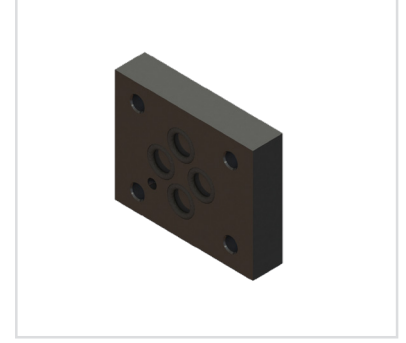


Features

- Body material aluminum 6013 - T4 (210 Bar 3000 PSI)
- Body surface eloxal (Anodic) coated,
- Fluid viscosity 10 - 500 mm²/s (10-420 cSt),
- For mineral oil ISO 6743/4

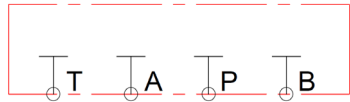
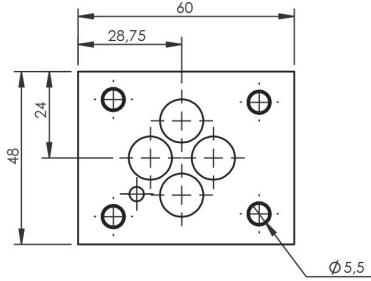
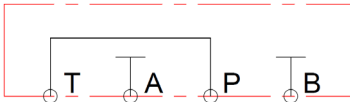
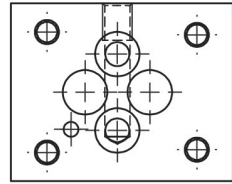
Özellikleri

- Gövde malzemesi alüminyum 6013-T4 (210 Bar 3000 PSI)
- Yüzey eloksal (Anodik) kaplama,
- Akışkan viskozitesi 10 - 500 mm²/s (10-420 cSt),
- ISO 6743/4 Mineral yağlar için.



General Parameters and Dimensions (mm) – Genel parametreler ve ölçüler (mm)

Size - Ölçü	P max	Thickness Kalınlık mm	Mounting Bolts Montaj Civatası	O-Ring mm	Weight Ağırlık
	Bar				Kg
MK-06P	210	13	M5x20	8x2	0,1
MK-06G	210	18	M5x25	8x2	0,13
MK-06S	210	18	M5x25	8x2	0,13
MK-06C1	210	13	M5x20	16x2	0,1
MK-06C2	210	13	M5x20	16x2	0,1

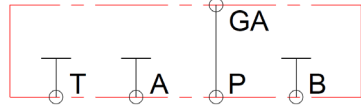
Order Code Sipariş Kodu	Hydraulic Diagram Hidrolik Şema	Technical Drawing Teknik Çizim
MK06P-Parallel (Paralel)		
MK06S-Serious (Seri)		

Order Code
Sipariş Kodu

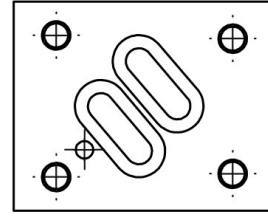
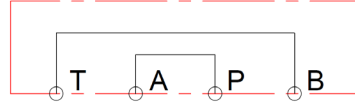
Hydraulic Diagram
Hidrolik Şema

Technical Drawing
Teknik Çizim

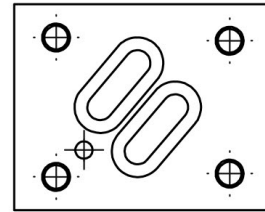
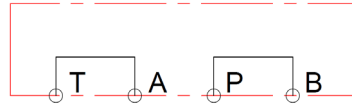
MK06G-P Gauge
(Manometre Çıkışlı)



MK06C1-Crossover
P-A, B-T
(Çapraz Keçiş)



MK06C2-Crossover
P-B, A-T
(ÇağrazKeçiş)



Features

- Body material aluminum 6013 - T4 (210 Bar 3000 PSI)
- Body surface eloxal (Anodic) coated,
- Flued viscosity 10 - 500 mm²/s (10-420 cSt),
- For mineral oil ISO 6743/4

Özellikleri

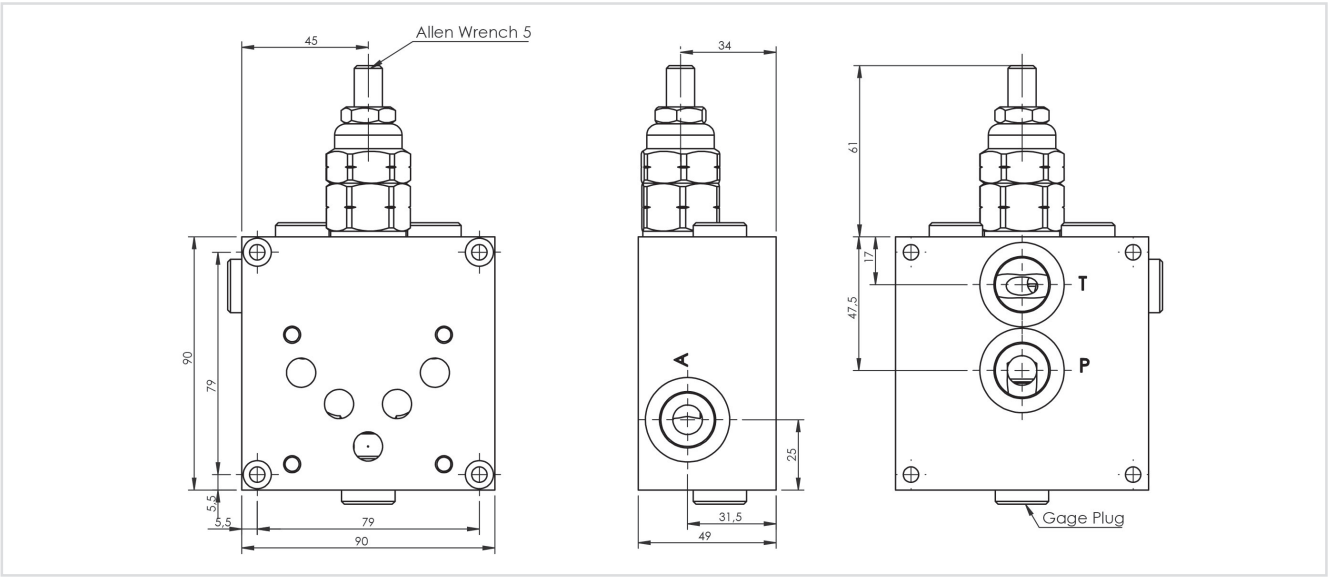
- Gövde malzemesi alüminyum 6013-T4 (210 Bar 3000 PSI)
- Yüzey eloksal (Anodik) kaplama,
- Akışkan viskozitesi 10 - 500 mm²/s (10-420 cSt),
- ISO 6743/4 Mineral yağlar için.



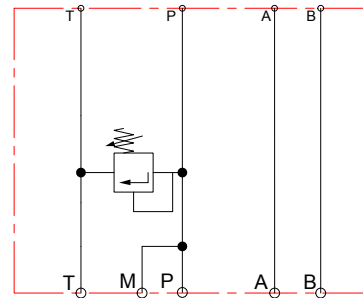
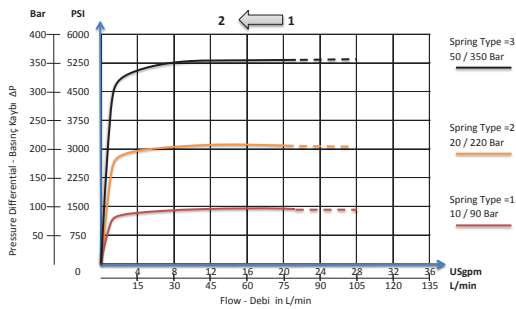
Order Code - Sipariş Kodu

MPE	-	10	-	1	A
Model - Tip		Size		No. Of Station Çıkış Sayısı	Material Malzeme
MPE		10 = 1/2"		1 Station 1 Çıkış	A-Alluminum Alüminyum

Size - Ölçü	Q max l/min	P max Bar	ØP-T BSPP	ØA-B BSPP	ØGA BSPP	Weight Ağırlık Kg
MPE-10-1A	80	210	1/2"	1/2"	1/4"	1,20



Pressure Drop And Hydraulic Circuit - Basınç Kaybı ve Hidrolik Şema



Features

- Body material aluminum 6013 - T4 (210 Bar 3000 PSI)
- Body surface eloxal (Anodic) coated,
- Flued viscosity 10 - 500 mm²/s (10-420 cSt),
- For mineral oil ISO 6743/4

Özellikleri

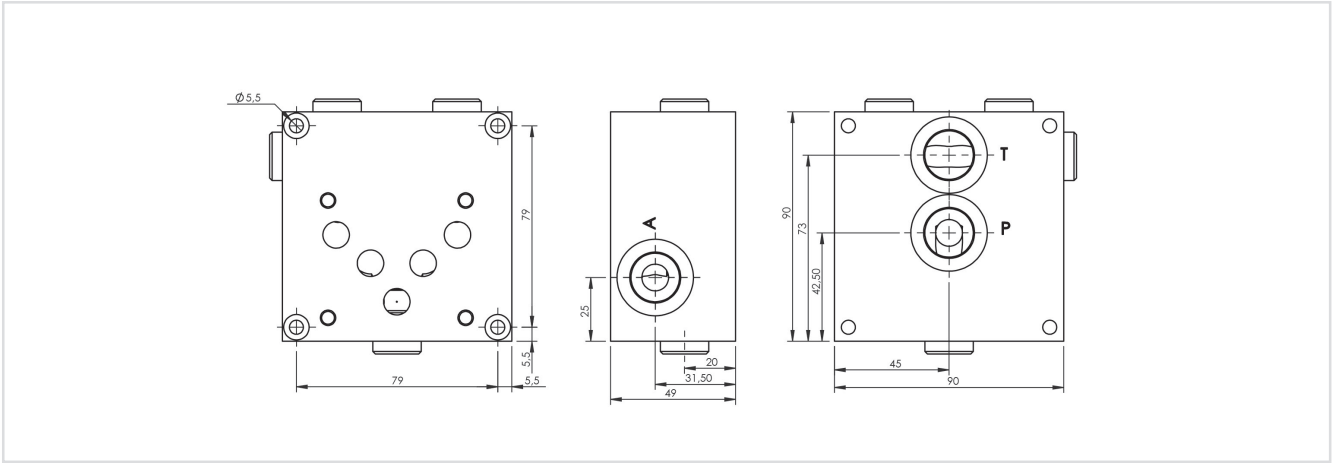
- Gövde malzemesi alüminyum 6013-T4 (210 Bar 3000 PSI)
- Yüzey eloksal (Anodik) kaplama,
- Akışkan viskozitesi 10 - 500 mm²/s (10-420 cSt),
- ISO 6743/4 Mineral yağlar için.



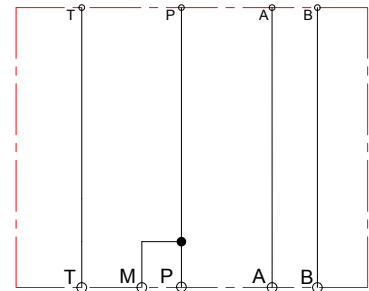
Order Code - Sipariş Kodu

MPD	- 10 -	1	A
Model - Tip	Size	No. Of Station Çıkış Sayısı	Material Malzeme
MPD	10 = 1/2"	1 Station 1 Çıkış	A-Alluminum Aluminyum

Size - Ölçü	Q max l/min	P max Bar	ØP-T BSPP	ØA-B BSPP	ØGA BSPP	Weight Ağırlık Kg
MPD-10-1A	80	210	3/4"	1/2"	1/4"	1,00



Hydraulic Circuit



Features

- Body material alluminum 6013 - T4 (210 Bar 3000 PSI)
- Body surface eloxal (Anodic) coated,
- Flued viscosity 10 - 500 mm²/s (10-420 cSt),
- For mineral oil ISO 6743/4

Özellikleri

- Gövde malzemesi alüminyum 6013-T4 (210 Bar 3000 PSI)
- Yüzey eloksal (Anodik) kaplama,
- Akışkan vizkozitesi 10 - 500 mm²/s (10-420 cSt),
- ISO 6743/4 Mineral yağlar için.

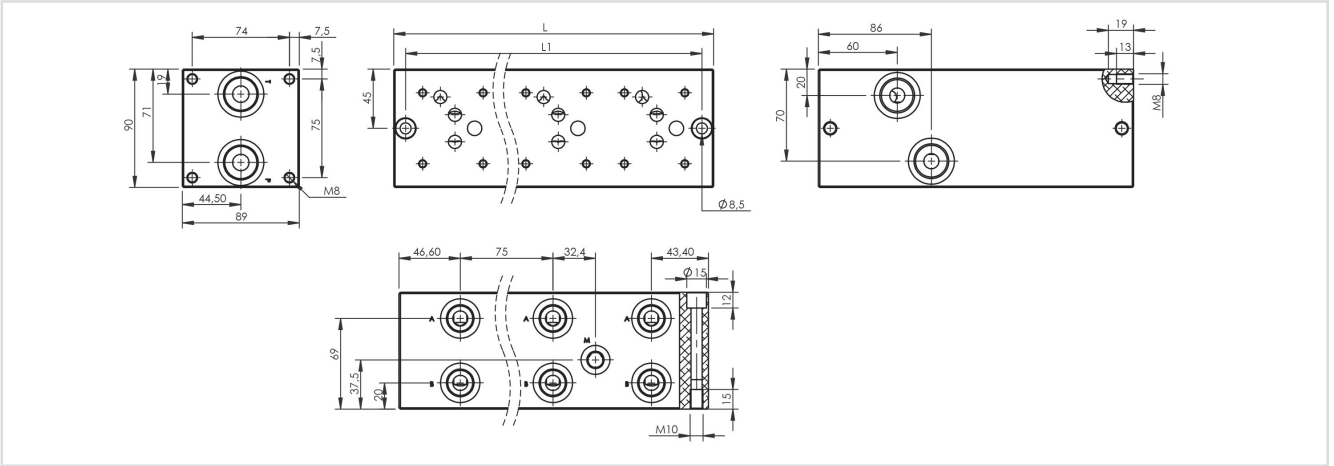


Order Code - Sipariş Kodu

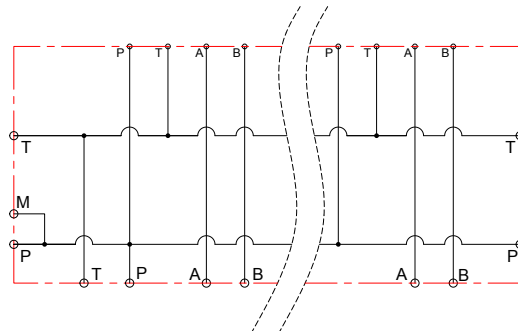
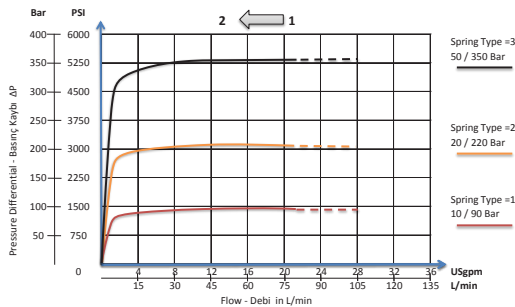
MPD	-	10	-	2	A
Model - Tip		Size		No. Of Station Çıkış Sayısı	Material Malzeme
MPD		10 = 1/2"		2-5 Station 2-5 Çıkış	A-Alluminum Alüminyum

General Parameters and Dimensions (mm) – Genel parametreler ve ölçüler (mm)

Size - Ölçü	Q max	P max	ØP-T	ØA-B	ØGA	L mm	L1 mm	Weight Ağırlık
	l/min	Bar	BSPP	BSPP	BSPP			Kg
MPD-10-2A	80	210	3/4"	1/2"	1/4"	165	147	3,25
MPD-10-3A	80	210	3/4"	1/2"	1/4"	240	222	4,55
MPD-10-4A	80	210	3/4"	1/2"	1/4"	315	297	5,85
MPD-10-5A	80	210	3/4"	1/2"	1/4"	390	372	7,15



Pressure Drop And Hydraulic Circuit - Basınç Kaybı ve Hidrolik Şema



Features

- Body material alluminium 6013 - T4 (210 Bar 3000 PSI)
- Body surface eloxal (Anodic) coated,
- Flued viscosity 10 - 500 mm²/s (10-420 cSt),
- For mineral oil ISO 6743/4

Özellikleri

- Gövde malzemesi alüminyum 6013-T4 (210 Bar 3000 PSI)
- Yüzey eloksal (Anodik) kaplama,
- Akışkan viskozitesi 10 - 500 mm²/s (10-420 cSt),
- ISO 6743/4 Mineral yağlar için.

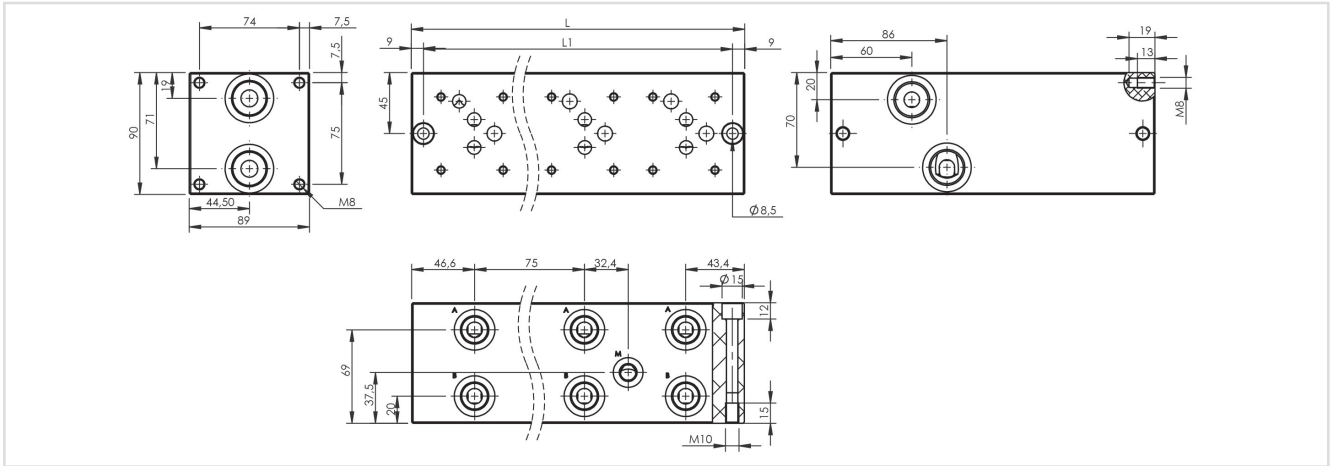


Order Code - Sipariş Kodu

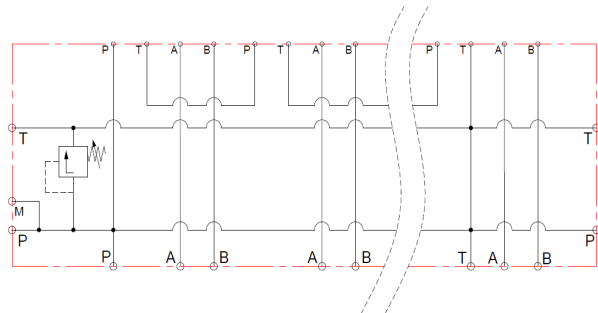
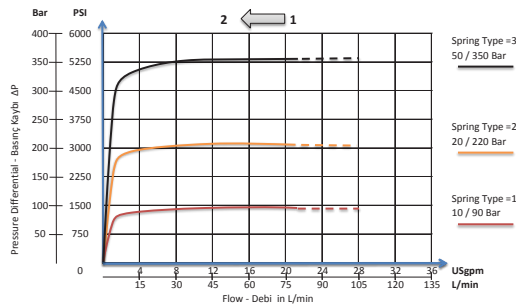
MSE	- 10	- 2	A
Model - Tip	Size	No. Of Station Çıkış Sayısı	Material Malzeme
MSE	10 = 1/2"	2-5 Station 2-5 Çıkış	A-Alluminium Alüminyum

General Parameters and Dimensions (mm) – Genel parametreler ve ölçüler (mm)

Size - Ölçü	Q max	P max	ØP-T	ØA-B	ØGA	L mm	L1 mm	Weight Ağırlık
	l/min	Bar	BSPP	BSPP	BSPP			Kg
MSE-10-2A	80	210	3/4"	1/2"	1/4"	165	147	3,50
MSE-10-3A	80	210	3/4"	1/2"	1/4"	240	222	4,80
MSE-10-4A	80	210	3/4"	1/2"	1/4"	315	297	6,10
MSE-10-5A	80	210	3/4"	1/2"	1/4"	390	372	7,40



Pressure Drop And Hydraulic Circuit - Basınç Kaybı ve Hidrolik Şema

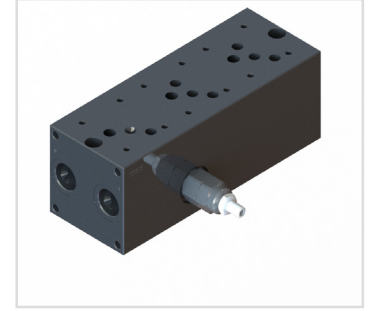


Features

- Body material alluminum 6013 - T4 (210 Bar 3000 PSI)
- Body surface eloxal (Anodic) coated,
- Flued viscosity 10 - 500 mm²/s (10-420 cSt),
- For mineral oil ISO 6743/4

Özellikleri

- Gövde malzemesi alüminyum 6013-T4 (210 Bar 3000 PSI)
- Yüzey eloksal (Anodik) kaplama,
- Akışkan vizkozitesi 10 - 500 mm²/s (10-420 cSt),
- ISO 6743/4 Mineral yağlar için.

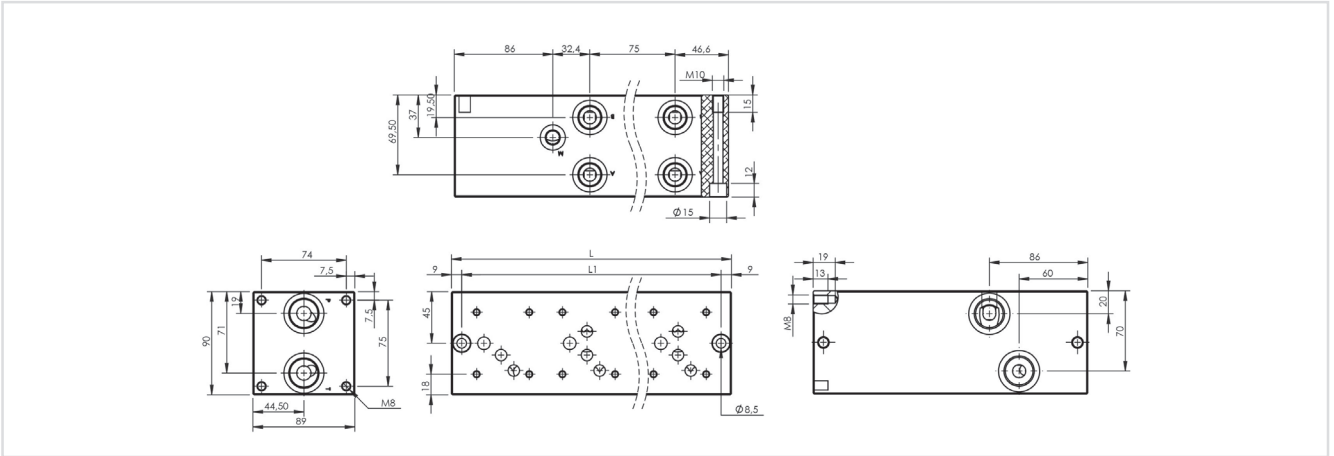


Order Code - Sipariş Kodu

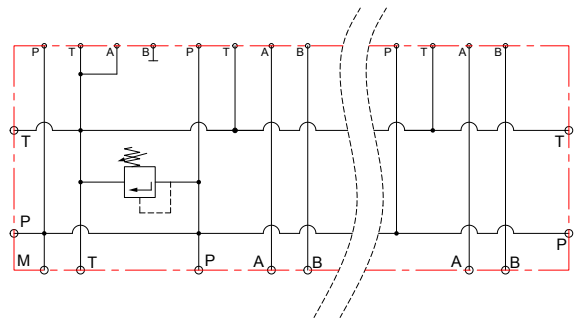
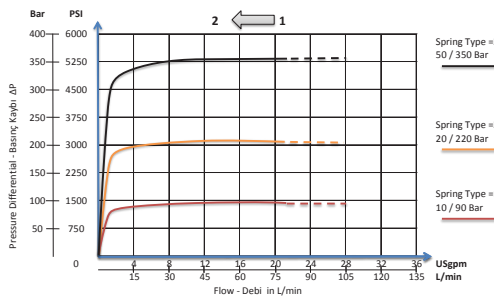
MPS	-	10	-	2		A
Model - Tip		Size		No. Of Station Çıkış Sayısı		Material Malzeme
MPS		10 = 1/2"		2-5 Station 2-5 Çıkış		A-Alluminum Aluminyum

General Parameters and Dimensions (mm) – Genel parametreler ve ölçüler (mm)

Size - Ölçü	Q max	P max	ØP-T	ØA-B	ØGA	L mm	L1 mm	Weight Ağırlık
	l/min	Bar	BSPP	BSPP	BSPP			Kg
MPS-10-2A	80	210	3/4"	1/2"	1/4"	240	222	4,80
MPS-10-3A	80	210	3/4"	1/2"	1/4"	315	297	6,20
MPS-10-4A	80	210	3/4"	1/2"	1/4"	390	372	7,60
MPS-10-5A	80	210	3/4"	1/2"	1/4"	465	9,00	



Pressure Drop And Hydraulic Circuit - Basınç Kaybı ve Hidrolik Şema

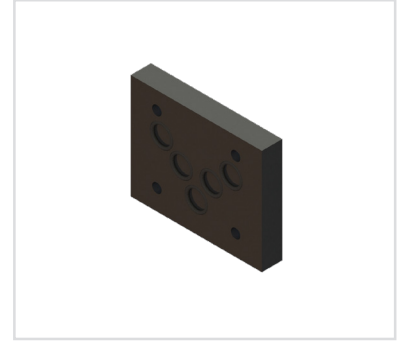


Features

- Body material alluminum 6013 - T4 (210 Bar 3000 PSI)
- Body surface eloxal (Anodic) coated,
- Flued viscosity 10 - 500 mm²/s (10-420 cSt),
- For mineral oil ISO 6743/4

Özellikleri

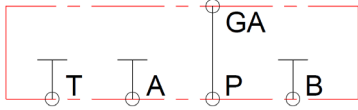
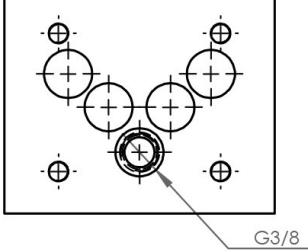
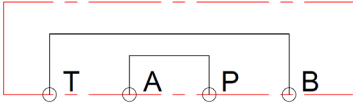
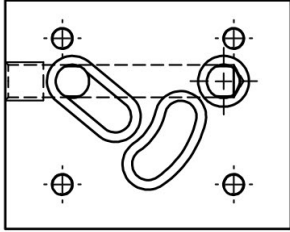
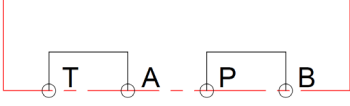
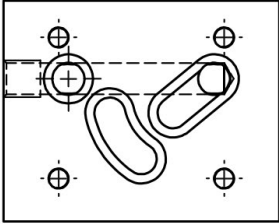
- Gövde malzemesi alüminyum 6013-T4 (210 Bar 3000 PSI)
- Yüzey eloksal (Anodik) kaplama,
- Akışkan viskozitesi 10 - 500 mm²/s (10-420 cSt),
- ISO 6743/4 Mineral yağlar için.



General Parameters and Dimensions (mm) – Genel parametreler ve ölçüler (mm)

Size - Ölçü	P max	Thickness Kalınlık mm	Mounting Bolts Montaj Cıvatası	O-Ring mm	Weight Ağırlık
					Kg
MK-10P	210/350	14	M6x25	12x2	0,4
MK-10G	210/350	24	M6x35	12x2	0,45
MK-10S	210/350	34	M6x45	12x2	0,58
MK-10C1	210/350	34	M6x45	24x2	0,58
MK-10C2	210/350	34	M6x45	24x2	0,58

Order Code Sipariş Kodu	Hydraulic Diagram Hidrolik Şema	Technical Drawing Teknik Çizim
MK10P-Parallel		
MK10S-Serious		

OrderCode Sipariş Kodu	Hydraulic Diagram Hidrolik Şema	Technical Drawing Teknik Çizim
<p>MK10G-P Gauge</p>		
<p>MK10C1- Crossover P-A, B-T</p>		
<p>MK10C2- Crossover P-B, A-T</p>		



ORIGINAL
VALVE

AKSESUAR

ACCESSORY



Features

- Suitable for direct in-line installation,
- Body Material steel DIN 1.7225,
- Body Surface nickel coated,
- All material is hardening,
- Flued viscosity 10 - 500 mm²/s (10-420 cSt),
- For mineral oil ISO 6743/4,

Özellikleri

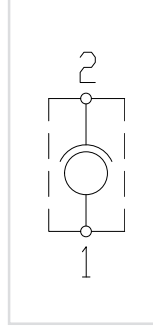
- Direkt hat üzerine montaja uygun,
- Gövde malzemesi çelik DIN 1.7225,
- Gövde yüzeyi nikel kaplama,
- Tamamı sertleştirilmiş,
- Akışkan viskozitesi 10 - 500 mm²/s (10-420 cSt),
- ISO 6743/4 Mineral yağlar için,



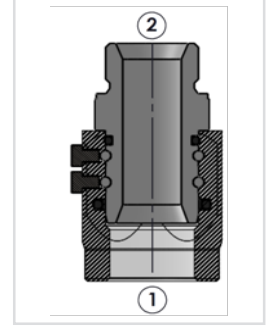
OrderCode – Sipariş Kodu

Model	Size	Thread Type – Diş Tipi
HSR	06 = 1/4"	B = BSPP
	08 = 3/8"	N = NPT
	10 = 1/2"	U = UNF
	15 = 3/4"	
	20 = 1"	
	25 = 1 1/4"	
	30 = 1 1/2"	
	40 = 2"	

Circuit - Şema

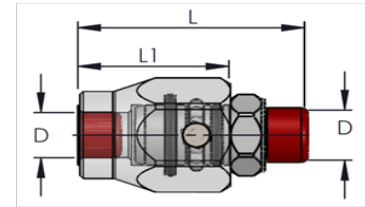
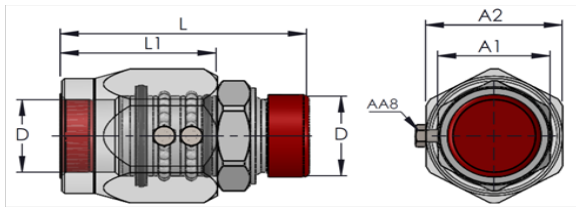


Sectional - Kesit



General Parameters and Dimensions (mm) – Genel parametreler ve ölçüler (mm)

Size - Ölçü	Q max	P max	Rotation	Speed	ØD	A1	A2	L	L1	Weight
	l/min	Bar	Dönmede	Devir	BSPP					Ağırık
			P Max Bar	Max Rpm						Kg
HSR-06	25	400	200	210	1/4"	19	30	61	42	0,22
HSR-08	30	400	200	170	3/8"	24	34	66	44	0,30
HSR-10	60	300	150	160	1/2"	27	36	71	47	0,36
HSR-15	100	300	150	120	3/4"	34	45	79	50	0,61
HSR-20	180	300	100	100	1"	41	50	90	57	0,84
HSR-25	280	250	80	80	1 1/4"	55	60	95	62	1,27
HSR-30	350	200	75	70	1 1/2"	60	65	106	68	1,58
HSR-40	500	200	50	40	2"	70	80	115	72	2,42



Size - Ölçü	1/4"	3/8"	1/2"	3/4"	1"	1 1/4"	1 1/2"	2"
1 - Tightening Torgues for stud - Sıkma Torku (Nm)	40	90	120	210	370	430	500	600
2 - Female Swivel Ends Torgue - Döner Eleman Torku (Nm)	20	35	60	115	140	190	260	320

Features

- Suitable for direct in-line installation,
- Body Material steel DIN 1.7225,
- Body Surface nickel coated,
- All material is hardening,
- Flued viscosity 10 - 500 mm²/s (10-420 cSt),
- For mineral oil ISO 6743/4,

Özellikleri

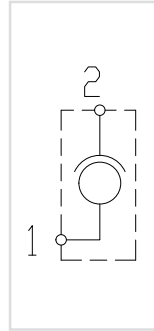
- Direkt hat üzerine montaja uygun,
- Gövde malzemesi çelik DIN 1.7225,
- Gövde yüzeyi nikel kaplama,
- Tamamı sertleştirilmiş,
- Akışkan viskozitesi 10 - 500 mm²/s (10-420 cSt),
- ISO 6743/4 Mineral yağlar için,



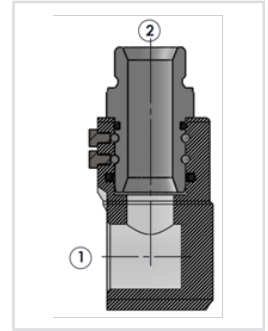
OrderCode – Sipariş Kodu

HSR	- 06	- B
Model	Size	Thread Type – Diş Tipi
HDSR	06 = 1/4"	B = BSPP
	08 = 3/8"	N = NPT
	10 = 1/2"	U = UNF
	15 = 3/4"	
	20 = 1"	
	25 = 1 1/4"	
	30 = 1 1/2"	
	40 = 2"	

Circuit - Şema

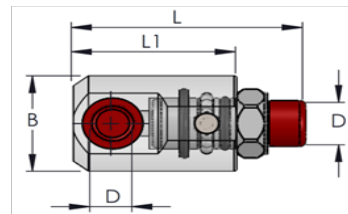
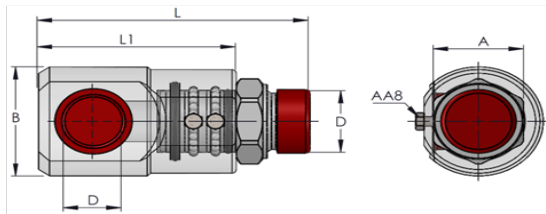


Sectional - Kesit



General Parameters and Dimensions (mm) – Genel parametreler ve ölçüler (mm)

Size - Ölçü	Q max	P max	Rotation	Speed Devir	ØD	A1	A2	L	L1	Weight Ağırlık
	l/min	Bar	Dönmede	Max Rpm						
HDSR-06	25	400	200	210	1/4"	19	33,5	69	50	0,35
HDSR-08	30	400	200	170	3/8"	24	37,5	76	54	0,43
HDSR-10	60	300	150	160	1/2"	27	39,5	87	63	0,53
HDSR-15	100	300	150	120	3/4"	34	54,5	99	70	0,99
HDSR-20	180	300	100	100	1"	41	59	123	90	1,52
HDSR-25	280	250	80	80	1 1/4"	55	68	133	100	2,23
HDSR-30	350	200	75	70	1 1/2"	60	78	153	115	3,15
HDSR-40	500	200	60	50	2"	70	108	183	140	7,15



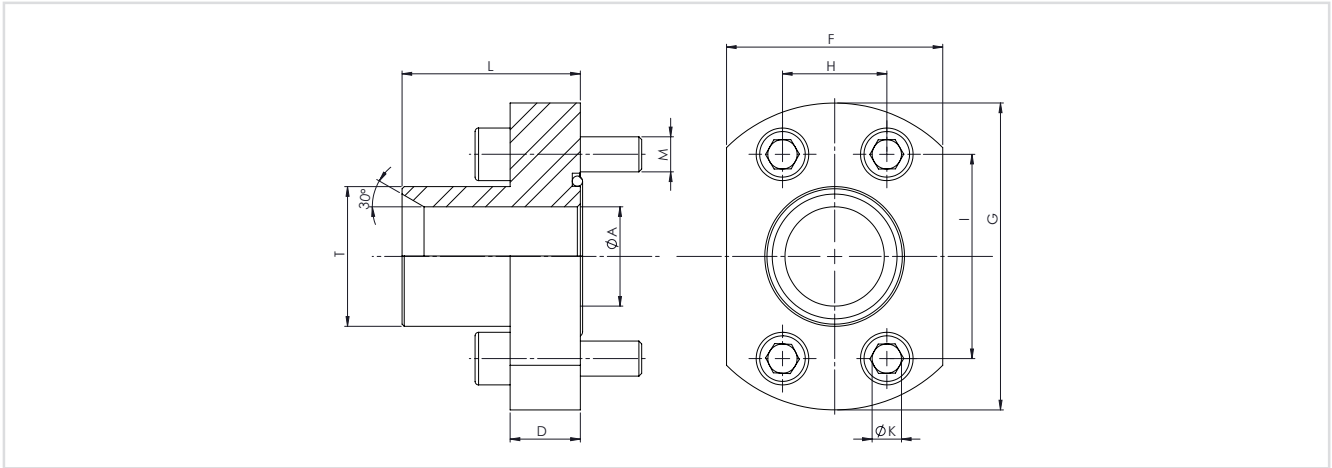
Model Size	1/4"	3/8"	1/2"	3/4"	1"	1 1/4"	1 1/2"	2"
1 - Tightening Torgues for stud - Sıkma Torku (Nm)	40	90	120	210	370	430	500	600
2 - Female Swivel Ends Torgue - Döner ElemeanTorku (Nm)	20	35	60	115	140	190	260	320

Features

- SAE flange 60° cone connector (BS 5200)
- Body Material steel DIN 1.7225
- Body Surface black oxide coating,

Özellikleri

- SAE BSP 60° Konik Bağlantılı Montaj Flanşı (BS 5200)
- Malzeme DIN 1.7225
- Gövde yüzeyi siyah oksidasyon,



3000 PSI Standard Pressure Series - 3000 PSI Standart Basınç Serisi (ISO 6162-1)

Code Ürün Kodları	Size-Ölçü	Technical Dimension - Teknik Ölçüler (mm)									Bolt - Civata M
		ØA	D	F	G	I	H	L	T (BSPP)	ØK	
SAE-301-G012	1/2-1/2"	12	16	43	58	38,0	17,5	39	1/2	8,7	M8X30
SAE-302-G034	3/4-3/4"	17	18	50	73	47,6	22,3	45	3/4	10,5	M10X35
SAE-303-G100	1-1"	22	18	54	78	52,4	26,2	49	1	10,5	M10X35
SAE-304-G114	1 1/4-1 1/4"	27	21	68	87	58,7	30,2	55	1-1/4	11,7(13,5)	M10X40(M12X40)
SAE-305-G112	1 1/2-1 1/2"	34	24	74	102	69,9	35,7	61	1-1/2	13,5(14,5)	M12X45(M14X45)
SAE-306-G200	2-2"	42	25	88	117	77,8	42,9	69	2	13,5(14,5)	M12X45(M14X45)

6000 PSI Standard Pressure Series - 6000 PSI Standart Basınç Serisi (ISO 6162-2)

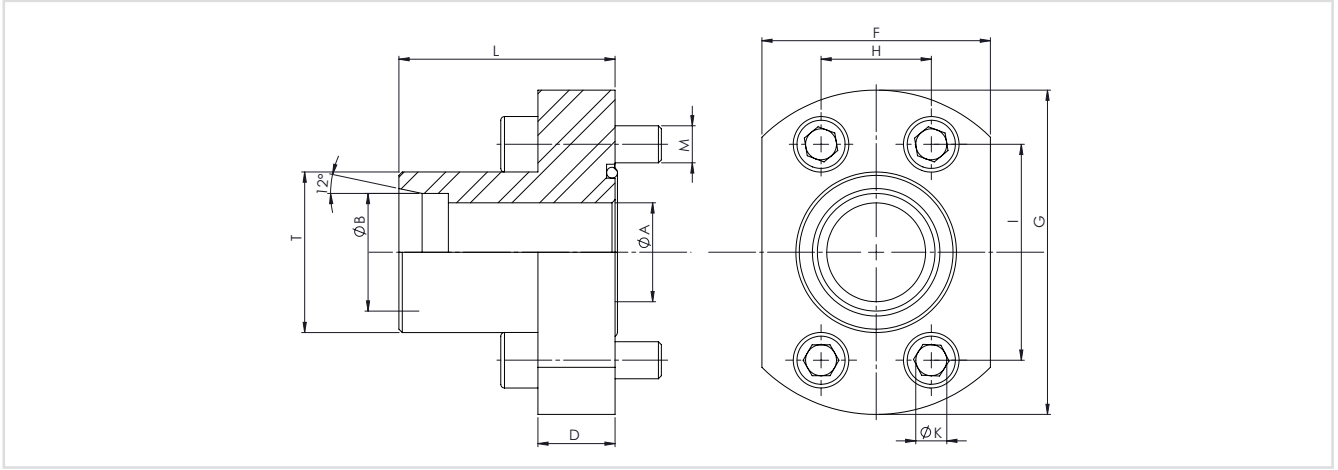
Code Ürün Kodları	Size-Ölçü	Technical Dimension - Teknik Ölçüler (mm)									Bolt - Civata M
		ØA	D	F	G	H	I	L	T (BSPP)	ØK	
SAE-601-G012	1/2-1/2"	12	16	43	58	18,2	40,5	40	1/2	8,7	M8X30
SAE-602-G034	3/4-3/4"	17	18	54	78	23,8	50,8	47	3/4	10,5	M10X35
SAE-603-G100	1-1"	22	21	68	87	27,8	57,2	56	1	13	M12X40
SAE-604-G114	1 1/4-1 1/4"	27	24	75	97	31,8	66,6	61	1-1/4	13,5	M12X45

Features

- SAE flange 24° cone connector (ISO 8434-1/DIN 2353)
- Body Material steel DIN 1.7225
- Body Surface black oxide coating,

Özellikleri

- SAE 24° Konik Bağlantılı Montaj Flanşı (ISO 8434-1/DIN 2353)
- Malzeme DIN 1.7225
- Gövde yüzeyi siyah oksidasyon,



3000 PSI Standard Pressure Series - 3000 PSI Standart Basınç Serisi (ISO 6162-1)

Code Ürün Kodları	Size-Ölçü	Technical Dimension - Teknik Ölçüler (mm)										Bolt - Civata M
		ØA	ØB	D	F	G	H	I	L	T(Metrik)	ØK	
SAE-301-S16	1/2"	12	16S	16	43	58	17,5	38,1	47	24x1,5	8,7	M8x30
SAE-302-S20	3/4"	16	20S	18	50	73	22,3	47,6	52	30x2,0	10,5	M10x35
SAE-303-S20	1"	16	20S	18	54	78	26,2	52,4	55	30x2,0	10,5	M10x35
SAE-303-S25	1"	20	25S	18	54	78	26,2	52,4	55	36x2,0	10,5	M10x35
SAE-304-S25	1-1/4"	20	25S	21	68	87	30,2	58,7	60	36x2,0	11,7(13,5)	M10x40(M12x40)
SAE-304-S30	1-1/4"	25	30S	21	68	87	30,2	58,7	60	42x2,0	11,7(13,5)	M10x40(M12x40)
SAE-305-S38	1-1/2"	32	38S	25	74	102	35,7	69,9	70	52x2,0	13,5(14,5)	M12x45(M14x45)

6000 PSI Standard Pressure Series - 6000 PSI Standart Basınç Serisi (ISO 6162-2)

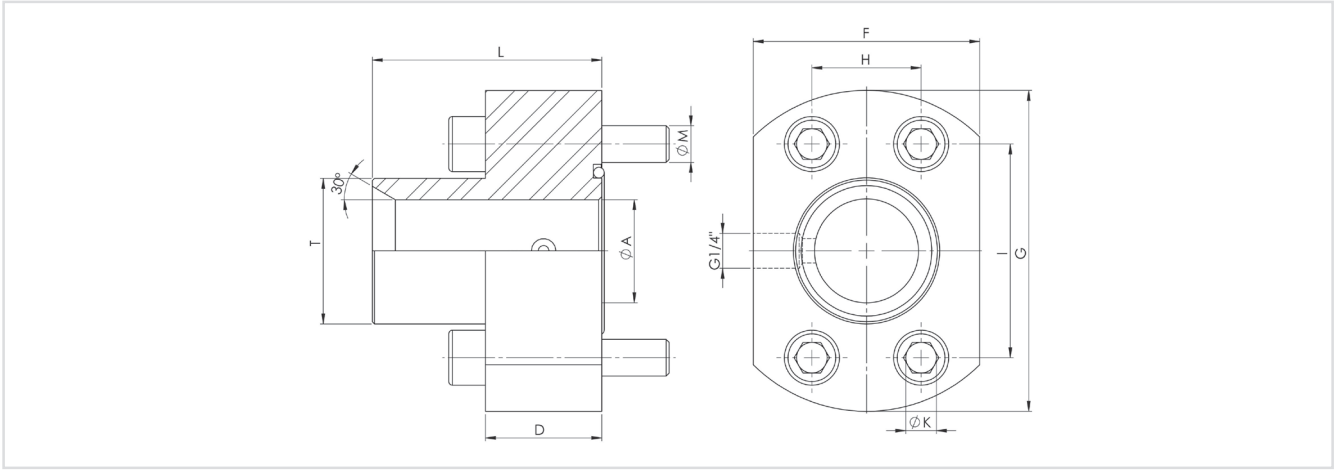
Code Ürün Kodları	Size-Ölçü	Technical Dimension - Teknik Ölçüler (mm)										Bolt - Civata M
		ØA	ØB	D	F	G	H	I	L	T(Metrik)	ØK	
SAE-601-S16	1/2"	12	16S	16	43	58	18,2	40,5	47	24X1,5	8,7	M8X30
SAE-602-S16	3/4"	12	16S	18	54	78	23,8	50,8	54	24X1,5	10,5	M10X35
SAE-602-S20	3/4"	16	20S	18	54	78	23,8	50,8	54	30X2,0	10,5	M10X35
SAE-603-S20	1"	16	20S	21	68	87	27,8	57,2	60	30X2,0	13	M12X40
SAE-604-S30	1-1/4"	25	30S	24	75	97	31,8	66,6	68	42X2,0	13,5	M12X45

Features

Özellikleri

- SAE flange 60° coneconnector with monometer output (BS 5200)
- Body Material steel DIN 1.7225
- Body Surface black oxide coating,

- SAE BSP 60° Konik Bağlantılı Montaj Flanşı Manometre Çıkışı (BS 5200)
- Malzeme DIN 1.7225
- Gövde yüzeyi siyah oksidasyon,



3000 PSI Standard Pressure Series - 3000 PSI Standart Basınç Serisi (ISO 6162-1)

Code Ürün Kodları	Size-Ölçü	Technical Dimension - Teknik Ölçüler (mm)									Bolt - Civata M
		ØA	D	F	G	H	I	L	T (BSPP)	ØK	
SAEM-301-G012	1/2-1/2"	12	30	43	58	17,5	38,0	53	1/2	8,7	M8X45
SAEM-302-G034	3/4-3/4"	17	32	50	73	22,3	47,6	59	3/4	10,5	M10X50
SAEM-303-G100	1-1"	22	32	54	78	26,2	52,4	63	1	10,5	M10X50
SAEM-304-G114	1 1/4-1 1/4"	27	35	68	87	30,2	58,7	69	1-1/4	11,7(13,5)	M10X55(M12X55)
SAEM-305-G112	1 1/2-1 1/2"	34	35	74	102	35,7	69,9	72	1-1/2	13,5(14,5)	M12X55(M14X55)
SAEM-306-G200	2-2"	42	35	88	117	42,9	77,8	79	2	13,5(14,5)	M12X55(M14X55)

6000 PSI Standard Pressure Series - 6000 PSI Standart Basınç Serisi (ISO 6162-2)

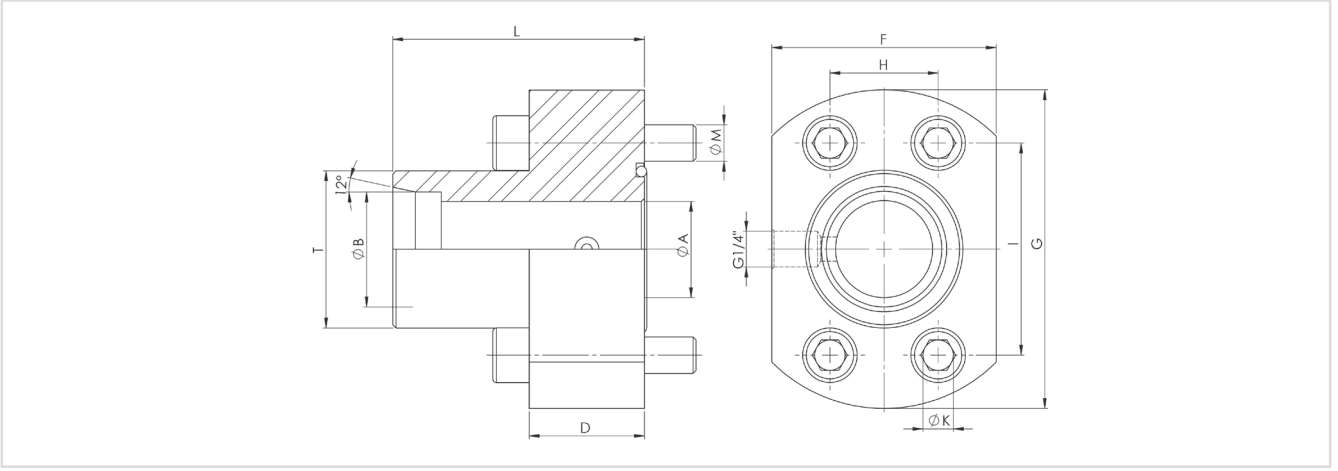
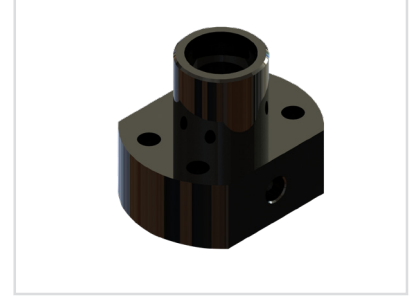
Code Ürün Kodları	Size-Ölçü	Technical Dimension - Teknik Ölçüler (mm)									Bolt - Civata M
		ØA	D	F	G	H	I	L	T (BSPP)	ØK	
SAEM-601-G012	1/2-1/2"	12	30	43	58	18,2	40,5	54	1/2	8,7	M8X45
SAEM-602-G034	3/4-3/4"	17	32	54	78	23,8	50,8	61	3/4	10,5	M10X50
SAEM-603-G100	1-1"	22	32	68	87	27,8	57,2	67	1	13	M12X50
SAEM-604-G114	1 1/4-1 1/4"	27	35	75	97	31,8	66,6	72	1-1/4	13,5	M12X55

Features

- SAE flange 24° cone connector with manometer output (ISO 8434-1/DIN 2353)
- Body Material steel DIN 1.7225
- Body Surface black oxide coating,

Özellikleri

- SAE 24° Konik Bağlantılı Montaj Flanşı Manometre Çıkışı (ISO 8434-1/DIN 2353)
- Malzeme DIN 1.7225
- Gövde yüzeyi siyah oksidasyon,



3000 PSI Standard Pressure Series - 3000 PSI Standart Basınç Serisi (ISO 6162-1)

Technical Dimension - Teknik Ölçüler (mm)												
Code Ürün Kodları	Size-Ölçü	ØA	ØB	D	F	G	H	I	L	T (BSPP)	ØK	Bolt - Civata M
SAEM-301-S16	1/2"	12	165	30	43	58	17,5	38,1	61	24x1,5	8,7	M8x45
SAEM-302-S20	3/4"	16	205	32	50	73	22,3	47,6	66	30x2,0	10,5	M10x50
SAEM-303-S20	1"	16	205	32	54	78	26,2	52,4	69	30x2,0	10,5	M10x50
SAEM-303-S25	1"	20	255	32	54	78	26,2	52,4	69	36x2,0	10,5	M10x50
SAEM-304-S25	1-1/4"	20	255	35	68	87	30,2	58,7	74	36x2,0	11,7(13,5)	M10x55(M12x55)
SAEM-304-S30	1-1/4"	25	305	35	68	87	30,2	58,7	74	42x2,0	11,7(13,5)	M10x55(M12x55)
SAEM-305-S38	1-1/2"	32	385	35	74	102	35,7	69,9	80	52x2,0	13,5(14,5)	M12x55(M14x55)

6000 PSI Standard Pressure Series - 6000 PSI Standart Basınç Serisi (ISO 6162-2)

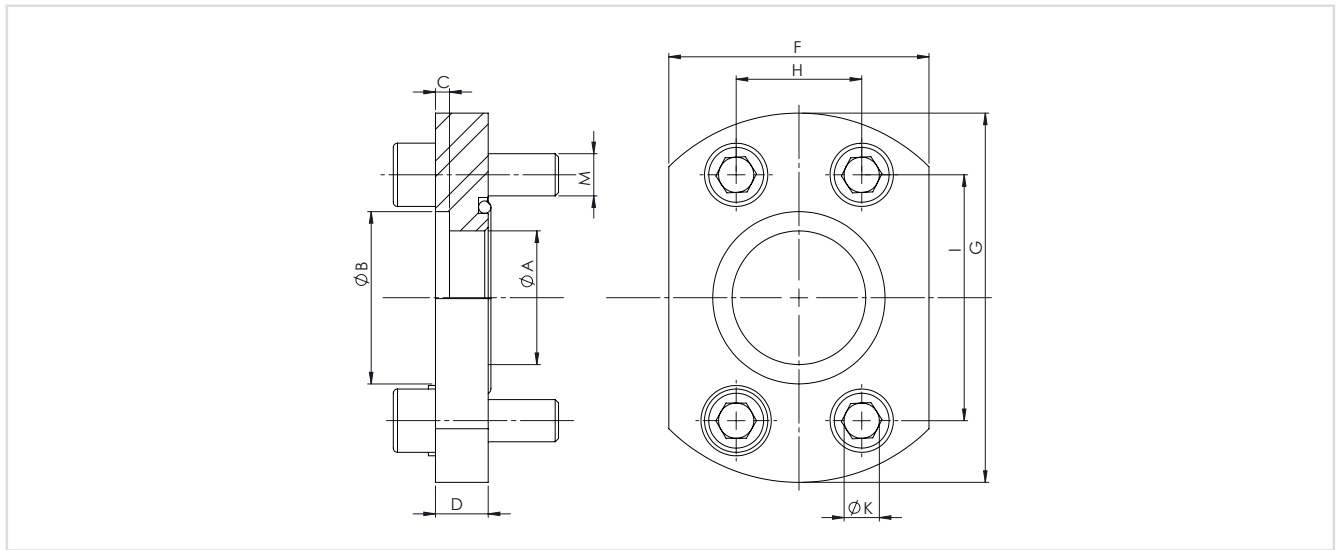
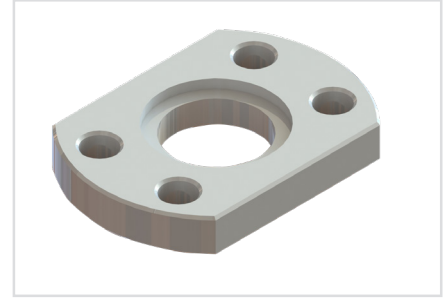
Technical Dimension - Teknik Ölçüler (mm)												
Code Ürün Kodları	Size-Ölçü	ØA	ØB	D	F	G	H	I	L	T (BSPP)	ØK	Bolt - Civata M
SAEM-601-S16	1/2"	12	165	30	43	58	18,2	40,5	61	24X1,5	8,7	M8X45
SAEM-602-S16	3/4"	12	165	32	54	78	23,8	50,8	68	24X1,5	10,5	M10X50
SAEM-602-S20	3/4"	16	205	32	54	78	23,8	50,8	68	30X2,0	10,5	M10X50
SAEM-603-S20	1"	16	205	32	68	87	27,8	57,2	71	30X2,0	13	M12X50
SAEM-604-S30	1-1/4"	25	305	35	75	97	31,8	66,6	79	42X2,0	13,5	M12X55

Features

- SAE Weld Courterflange (Flat Style),
- Body Material steel DIN 1.7225
- Body Surface oiled,

Özellikleri

- Tek Parça Soket Kaynak Flanş (Düz Tip)
- Malzeme DIN 1.7225
- Gövde yüzeyi koruyucu yağlı,



3000 PSI Standard Pressure Series - 3000 PSI Standart Basınç Serisi (ISO 6162-1)

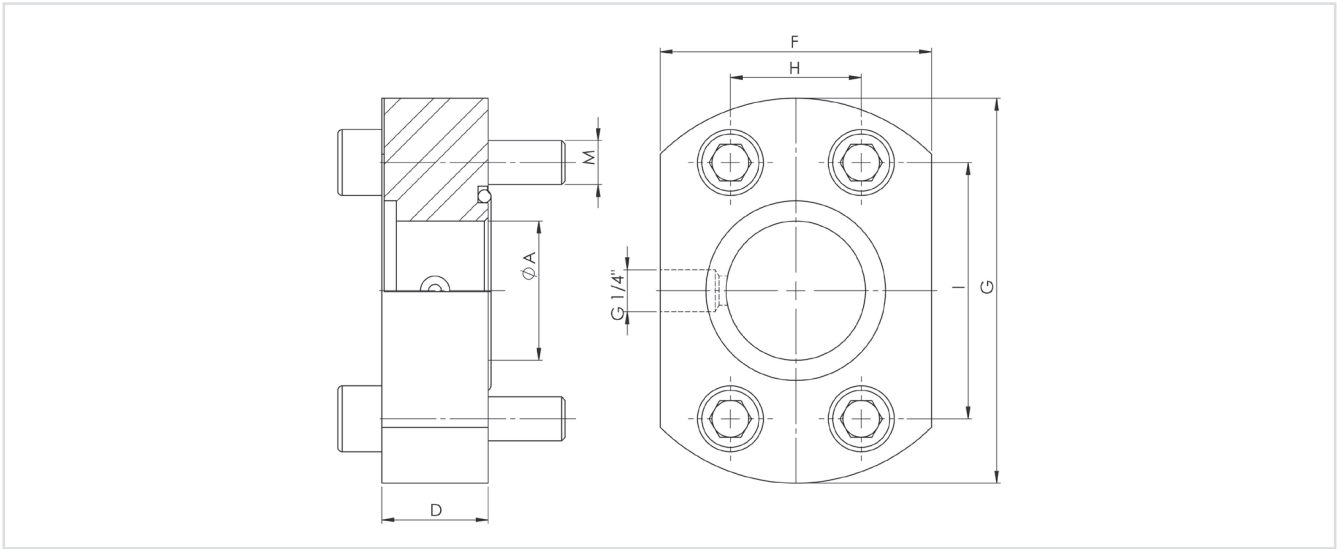
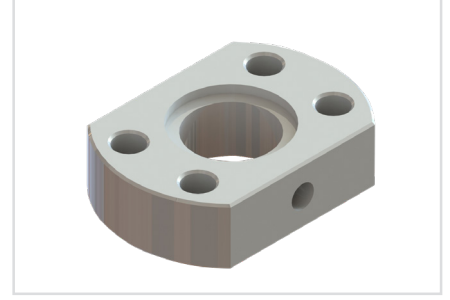
Code Ürün Kodları	Size-Ölçü	Technical Dimension - Teknik Ölçüler (mm)								Bolt - Civata M	
		ØA	ØB	D	F	G	H	I	C		ØK
SAE-301-OW-22,5/13	1/2"	13	22,5	10	47	58	17,5	38,1	3	8,5	M8X25
SAE-302-OW-28,5/19	3/4"	19	28,5	12	50	73	22,3	47,6	4	10,5	M10X30
SAE-303-OW-35,5/25	1"	25	35,5	12	54	77	26,2	52,4	4	10,5	M10X30
SAE-304-OW-42,5/32	1 1/4"	32	42,5	12	68	87	30,2	58,7	4	11,5	M10X30
SAE-305-OW-49/38	1 1/2"	38	49	15	79	102	35,7	69,9	4	13,5	M12X35
SAE-306-OW-61/51	2"	51	61	15	88	117	42,9	77,8	4	13,5	M12X35
SAE-307-OW-77/63	2-1/2"	63	77	15	101	137	50,8	88,9	4	13,5	M12X35
SAE-308-OW-90/73	3"	73	90	20	127	157	61,9	106,4	5	17,0	M16X50

Features

- SAE Weld Courterflange With Manometre Output (Flat Style),
- Body Material steel DIN 1.7225
- Body Surface oiled,

Özellikleri

- Tek Parça Soket Kaynak Flanş
- Manometre Çıkışlı (Düz Tip)
- Malzeme DIN 1.7225
- Gövde yüzeyi koruyucu yağlı,



3000 PSI Standard Pressure Series - 3000 PSI Standart Basınç Serisi (ISO 6162-1)

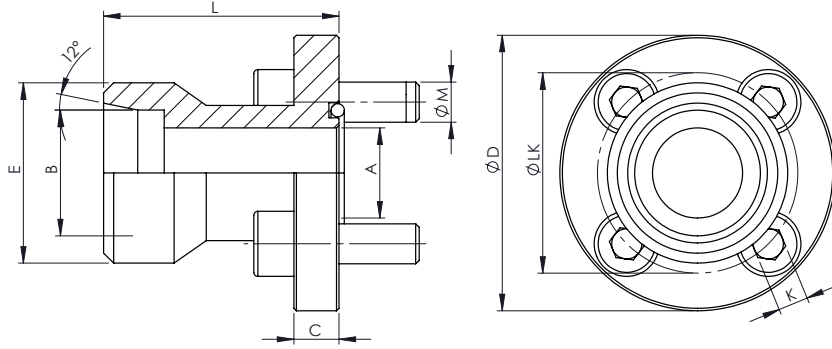
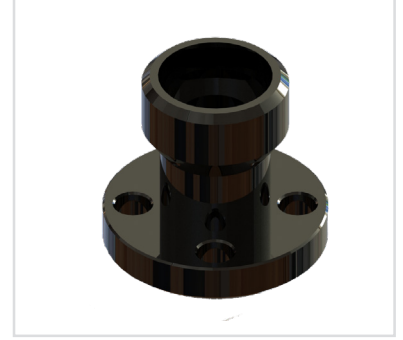
Code Ürün Kodları	Size-Ölçü	Technical Dimension - Teknik Ölçüler (mm)								ØK	Bolt - Civata M
		ØA	ØB	D	F	G	H	I	C		
SAEM-301-OW-22,5/13	1/2"	13	22,5	24	47	58	17,5	38,1	3	8,5	M8X40
SAEM-302-OW-28,5/19	3/4"	19	28,5	26	50	73	22,3	47,6	4	10,5	M10X45
SAEM-303-OW-35,5/25	1"	25	35,5	26	54	77	26,2	52,4	4	10,5	M10X45
SAEM-304-OW-42,5/32	1 1/4"	32	42,5	26	68	87	30,2	58,7	4	11,5	M10X45
SAEM-305-OW-49/38	1 1/2"	38	49	29	79	102	35,7	69,9	4	13,5	M12X50
SAEM-306-OW-61/51	2"	51	61	29	88	117	42,9	77,8	4	13,5	M12X50
SAEM-307-OW-77/63	2-1/2"	63	77	29	101	137	50,8	88,9	4	13,5	M12X50
SAEM-308-OW-90/73	3"	73	90	34	127	157	61,9	106,4	5	17,0	M16X65

Features

- 24° Cone Connector Male Straight Flange,
- Body Material steel DIN 1.7225,
- Body Surface black oxide coating,

Özellikleri

- 24° Konik Bağlantılı Erkek Eksen Adaptör
- Malzeme DIN 1.7225,
- Gövde yüzeyi siyah oksidasyon,



Standard Pressure Series - Standart Basınç Serisi (DIN 3901)

Code Ürün Kodları	Technical Dimension - Teknik Ölçüler (mm)							ØK	Bolt - Civata M
	ØA	ØB	C	D	L	LK	E(Metrik)		
E430-S16	12	16	8	42	33	30	M24x1,5	6,5	M6x15
E435-S12	9	12	8	50	30	35	M20x1,5	6,4	M6x15
E435-S16	12	16	8	50	33	35	M24x1,5	6,5	M6x15
E440-S20	16	20	9	55	47	40	M30x2	8,5	M8x15
E440-S25	18	25	9	55	47	40	M36x2	8,5	M8x15
E455-S25	20	25	12	78	50	55	M36x2	8,5	M8x20



orval.com.tr



Büsan Org. San. Fevzi Çakmak Mah.
Kosgeb Cad. 10641. Sk. No: 37
Karatay/KONYA/TÜRKİYE



+90 332 345 29 29



satis@orval.com.tr



+90 332 345 29 23



bilgi@orval.com.tr

