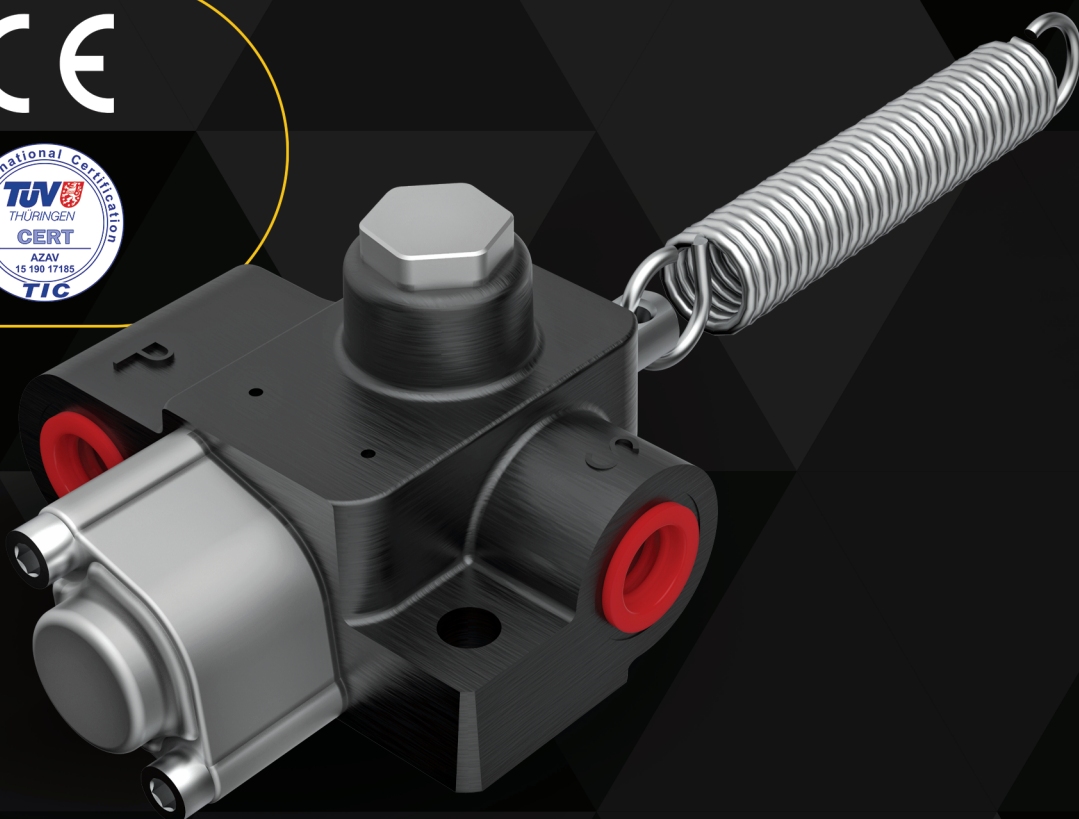
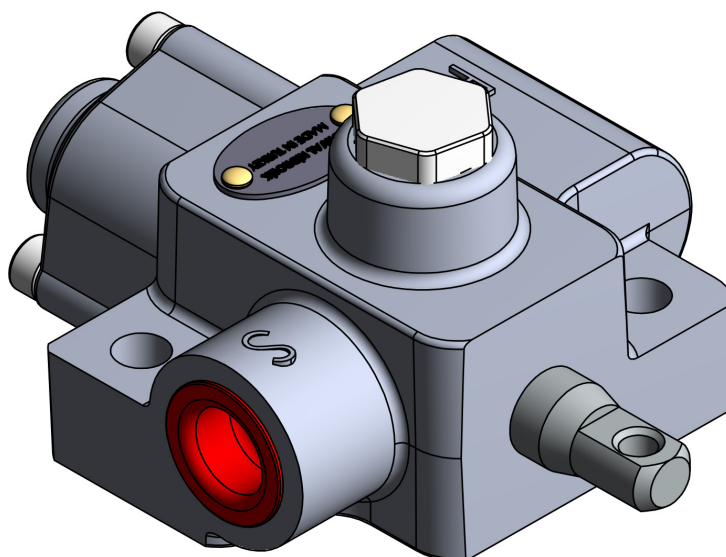




TIPPER VALVE  
**ORV-RSV**

CE





## CONTENTS

Working Conditions

465

Dimensional Data

466

Hydraulic Circuit

467

RSV - Part List

468

## Additional Informations

**Note:** This catalog shows the product in the most standard configurations. For Other Configurations, more detailed information or special request, Please contact Customer Service Dpt.

**Warning!:** All specifications of this catalog refer to the standard product at this date (03/2013). ORVAL, oriented to a continuous improvement, reserves the right to discontinue, modify or revise the specifications, without notice.

ORVAL IS NOT RESPONSIBLE FOR ANY DAMAGE CAUSED BY AN INCORRECT USE OF THE PRODUCT.

**WORKING CONDITIONS**

MODEL	ORV-RSV
Nominal Flow Displacement Totally	80 l/min 21 USGPM
Maximum Operating Pressure	300 Bar - 4400 PSI
Weight	3,2 Kg - 7,05 lbs
Oil Temperature with NBR Seals	-20 to 80 C° (-4 to 176 F°)
with FPM (Viton) Seals	-20 to 100 C° (-4 to 212 F°)
Oil Filtration	≤30 μ
Ambiant Temperature Range	-35 to 60 C° (-31 to 140 F°)
Internal Leakage at 100 bar (1450 PSI), 40C° (110 F°), 46 cSt - A(B)-T)	3 cm <sup>3</sup> /min 0,18 in <sup>3</sup> /min
Max. Level Of Contamination	19/16 - ISO 4406

**Not:** This catalogue shows technical specifications measured with mineral oil of 46 mm<sup>2</sup>/s-46 cSt viscosity at 40 C° temparture.

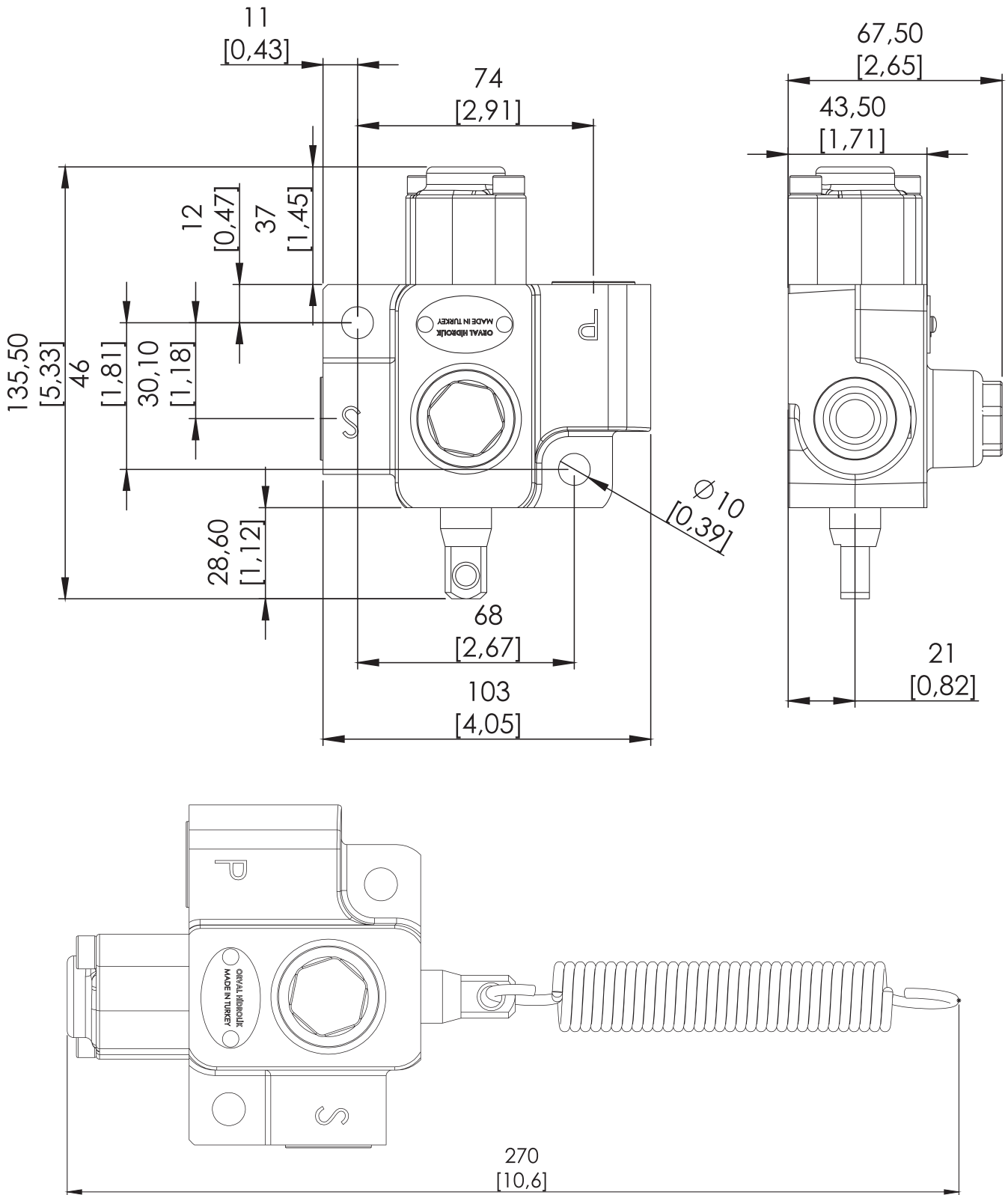
Double acting hand pumps suitable to operate single acting applications. They can be fitted also onto tank and are equipped with tapered lowering valve. They are available with nodular cast-iron body and nickel-plated spool.

**PORTS THREADS And STANDART THREADS**

Model	BSP (Iso 228)	UN-UNF (Iso 11926-1)	Metric (Iso 262)
<b>RSV</b>	G 1/2	3/4 - 16 UNF	M22x1.5
	G 3/8	9/16 - 18 UNF	M8x1.5

**DIMENSIONAL DATA**

**RSV – End Of Stroke Valves**

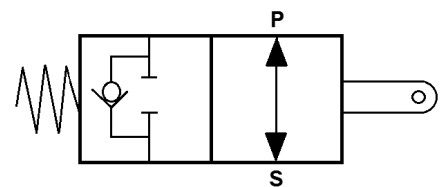
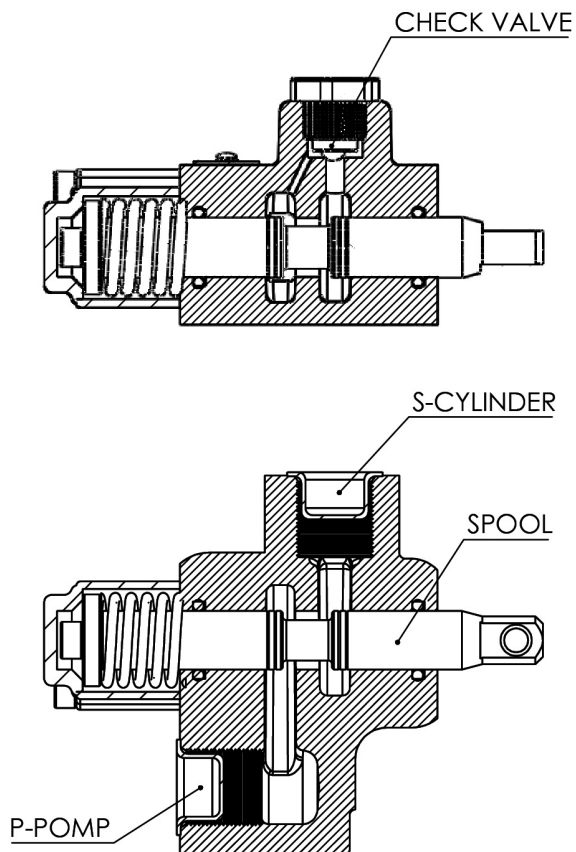


## HYDRAULIC CIRCUIT

### RSV-end of stroke valve

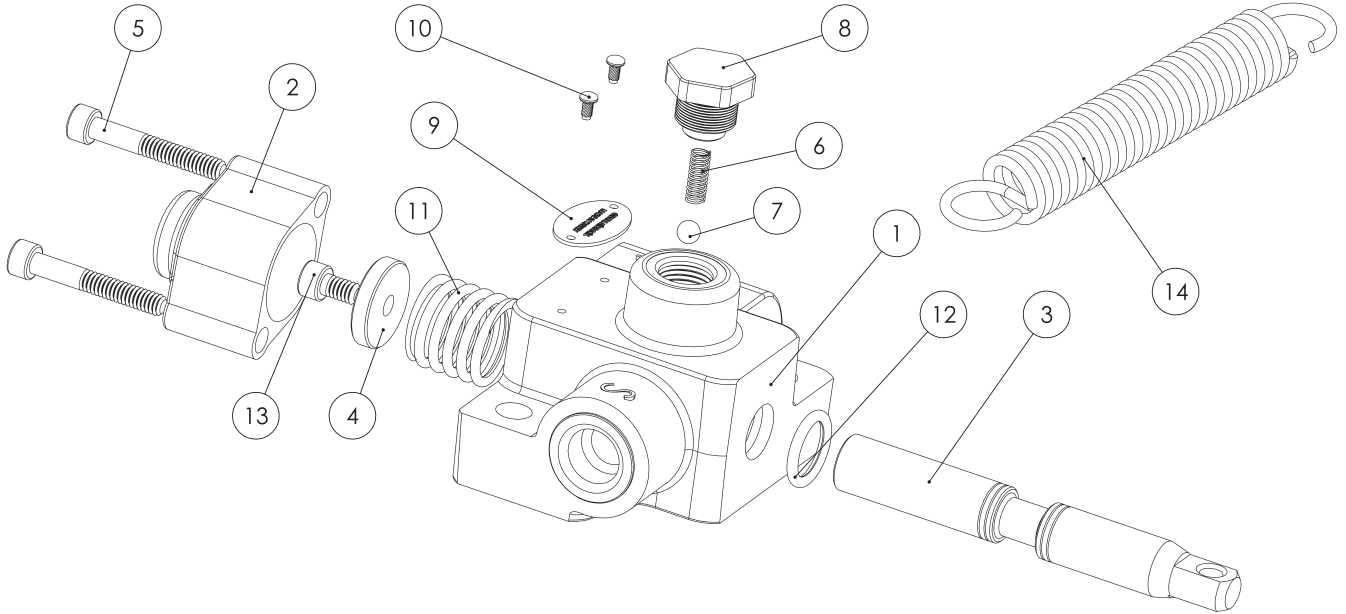
Port Apperance

Diagram



**RSV - Part List**
**Order Example**
**ORV RSV**

Base Code "0" ——— Type



ITEM NO	ORDER CODE	PART NAME	DESCRIPTION	QUANTITY
1	1509120	RSV Body		1
2	960112	Spring Cap		1
3	820001	RSV 1A Spool		1
4	9505019	RSV Washer		1
5	9501005	Bolt	M6x35	2
6	940120	RSV Check Valve Spring		1
7	9510002	Suction Ball		1
8	943024	RSV Check Valve Plug		1
9	950001	Number Plate		1
10	950000	Rivet		1
11	940121	RSV Spool Spring		1
12	9507003	O-ring	16x3	2
13	9501001	Bolt	M5x14	1
14	940122	RSV Tension Spring		1

# ORIGINAL VALVE



Büsan Org. San. Fevzi Çakmak Mah. Kosgeb Cad.  
10641. Sk. No: 37 Karatay/KONYA/TÜRKİYE



+90 332 **345 29 29**



+90 332 **345 29 23**



satis@**orval**.com.tr



bilgi@**orval**.com.tr

